

### Apzīmējumi

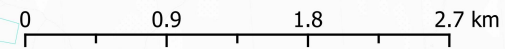
- Dabas lieguma "Lubāna mitrājs" robeža
- ES nozīmes biotopa robeža
- Zemes vienību robeža
- Autoceļš
- Ciems

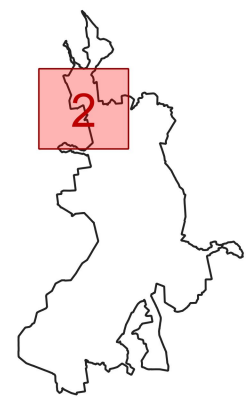
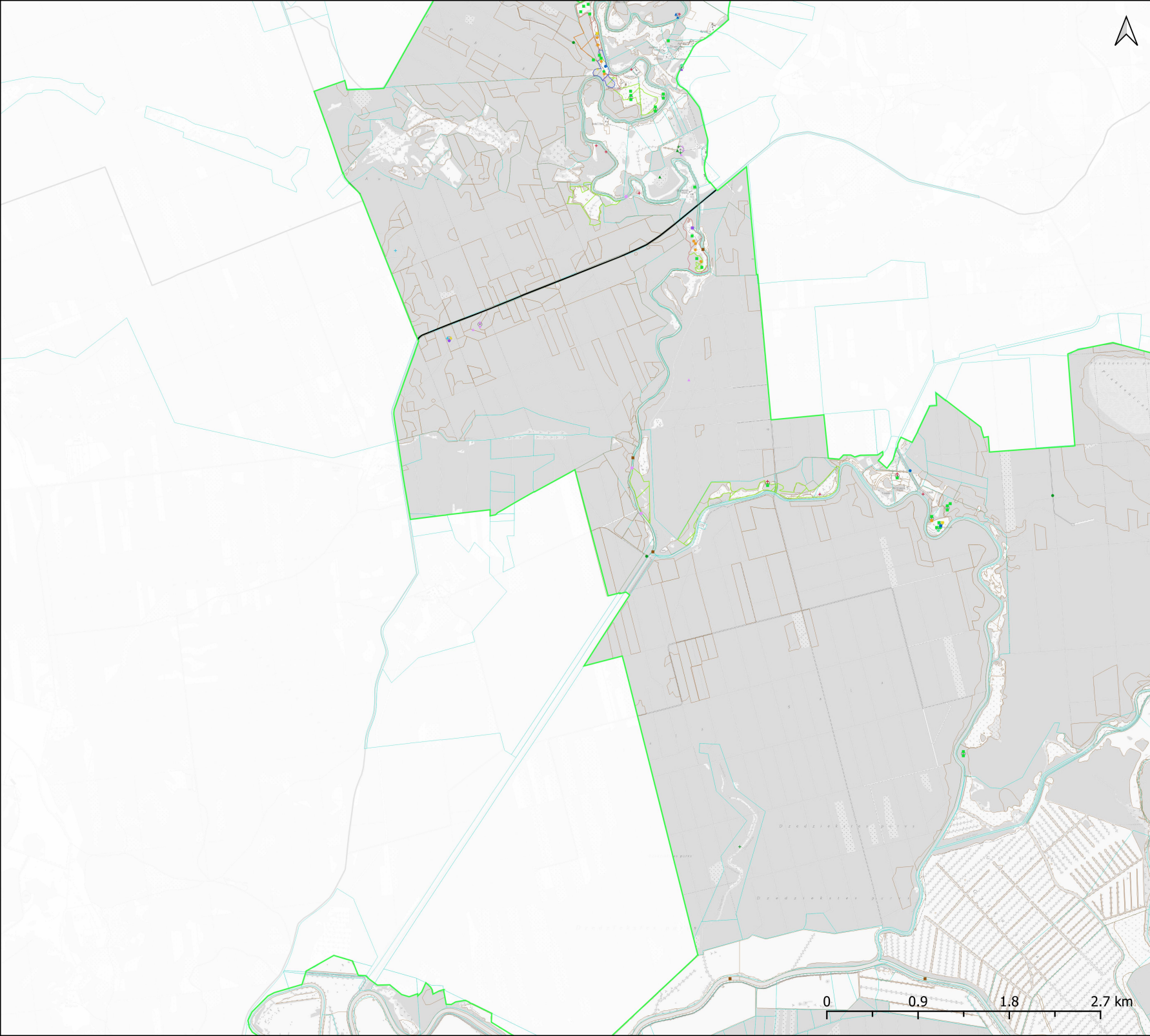
### Bez mugurkaulnieku dzīvotnes

- Anthrenochernes stellae
- Boros schneideri
- Cucujus cinnaberinus
- Euphydryas aurinia
- Graphoderus bilineatus
- Leucorrhinia pectoralis
- Osmoderma eremita
- Oxyporus mannerheimii

### Bez mugurkaulnieku atradnes

- Aeshna affinis
- Aeshna isocelis
- Aeshna mixta
- Aeshna viridis
- Anthrenochernes stellae
- Apatura ilia
- Apatura iris
- Boros schneideri
- Catocala fraxini
- Ceruchus chrysomelinus
- Chalcophora mariana
- Clausilia cruciata
- Cochlippa nitens
- Coenonympha hero
- Cucujus cinnaberinus
- Cucujus haematodes
- Dolomedes plantarius
- Dorcus parallelopedus
- Dytiscus latissimus
- Epiteca bimaculata
- Euphydryas aurinia
- Graphoderus bilineatus
- Laphria gibbosa
- Lasius fuliginosus
- Leucorrhinia albifrons
- Leucorrhinia caudalis
- Leucorrhinia pectoralis
- Libellula fulva
- Limenitis camilla
- Limenitis populi
- Lopinga achine
- Lycaena dispar
- Nehalennia speciosa
- Oedipoda caerulescens
- Ophiogomphus cecilia
- Osmoderma barnabita
- Papilio machaon
- Parnassius mnemosyne
- Peltis grossa
- Prionychus ater
- Protaetia lugubris
- Unio crassus





### Apzīmējumi

- Dabas lieguma "Lubāna mitrājs" robeža
- ES nozīmes biotopa robeža
- Zemes vienību robeža
- Autoceļš
- Ciems

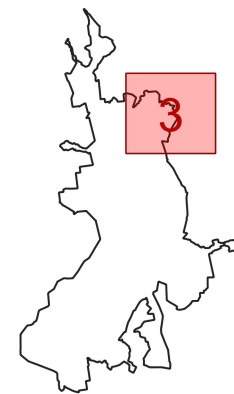
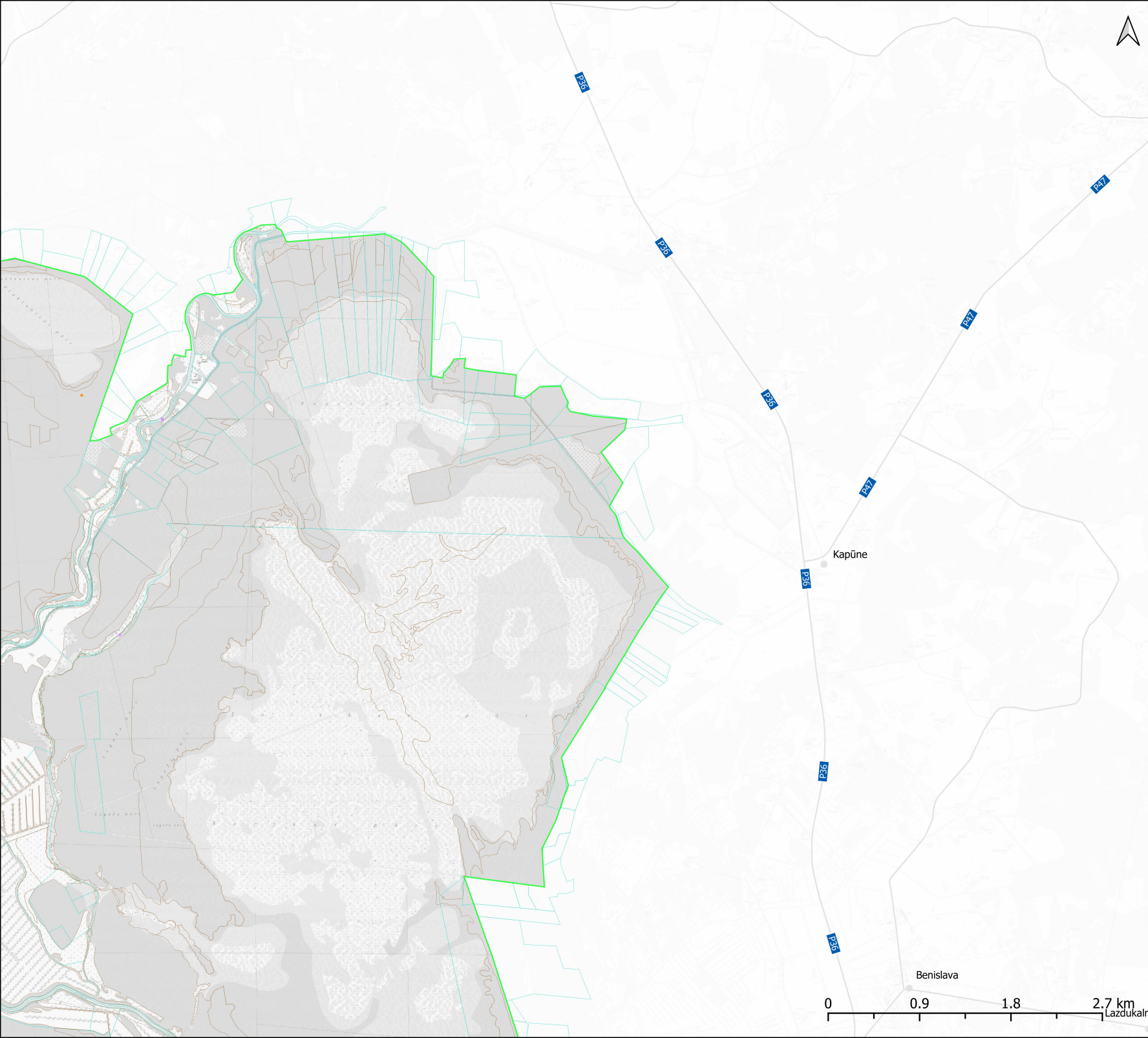
### Bezmugurkaulnieku dzīvotnes

- Anthreochernes stellae*
- Boros schneideri*
- Cucujus cinnaberinus*
- Euphydryas aurinia*
- Graphoderus bilineatus*
- Leucorrhinia pectoralis*
- Osmoderma eremita*
- Oxyporus mannerheimii*

### Bezmugurkaulnieku atradnes

- *Aeshna affinis*
- *Aeshna isoceles*
- *Aeshna mixta*
- *Aeshna viridis*
- *Anthreochernes stellae*
- *Apatura ilia*
- *Apatura iris*
- *Boros schneideri*
- *Catocala fraxini*
- *Ceruchus chrysoelinus*
- *Chalcophora mariana*
- *Clausilia cruciata*
- *Cochlicopa nitens*
- *Coenonympha hero*
- *Cucujus cinnaberinus*
- *Cucujus haematodes*
- *Dolomedes plantarius*
- *Dorcus parallelipedus*
- *Dytiscus latissimus*
- *Epithea bimaculata*
- *Euphydryas aurinia*
- *Graphoderus bilineatus*
- *Laphria gibbosa*
- *Lasius fuliginosus*
- *Leucorrhinia albifrons*
- *Leucorrhinia caudalis*
- *Leucorrhinia pectoralis*
- *Libellula fulva*
- *Limenitis camilla*
- *Limenitis populi*
- *Lopinga achine*
- *Lycaena dispar*
- *Nehalennia speciosa*
- *Oedipoda caerulea*
- *Ophiogomphus cecilia*
- *Osmoderma barnabita*
- *Papilio machaon*
- *Parnassius mnemosyne*
- *Peltis grossa*
- *Prionychus ater*
- *Protaetia lugubris*
- *Unio crassus*





## Apzīmējumi

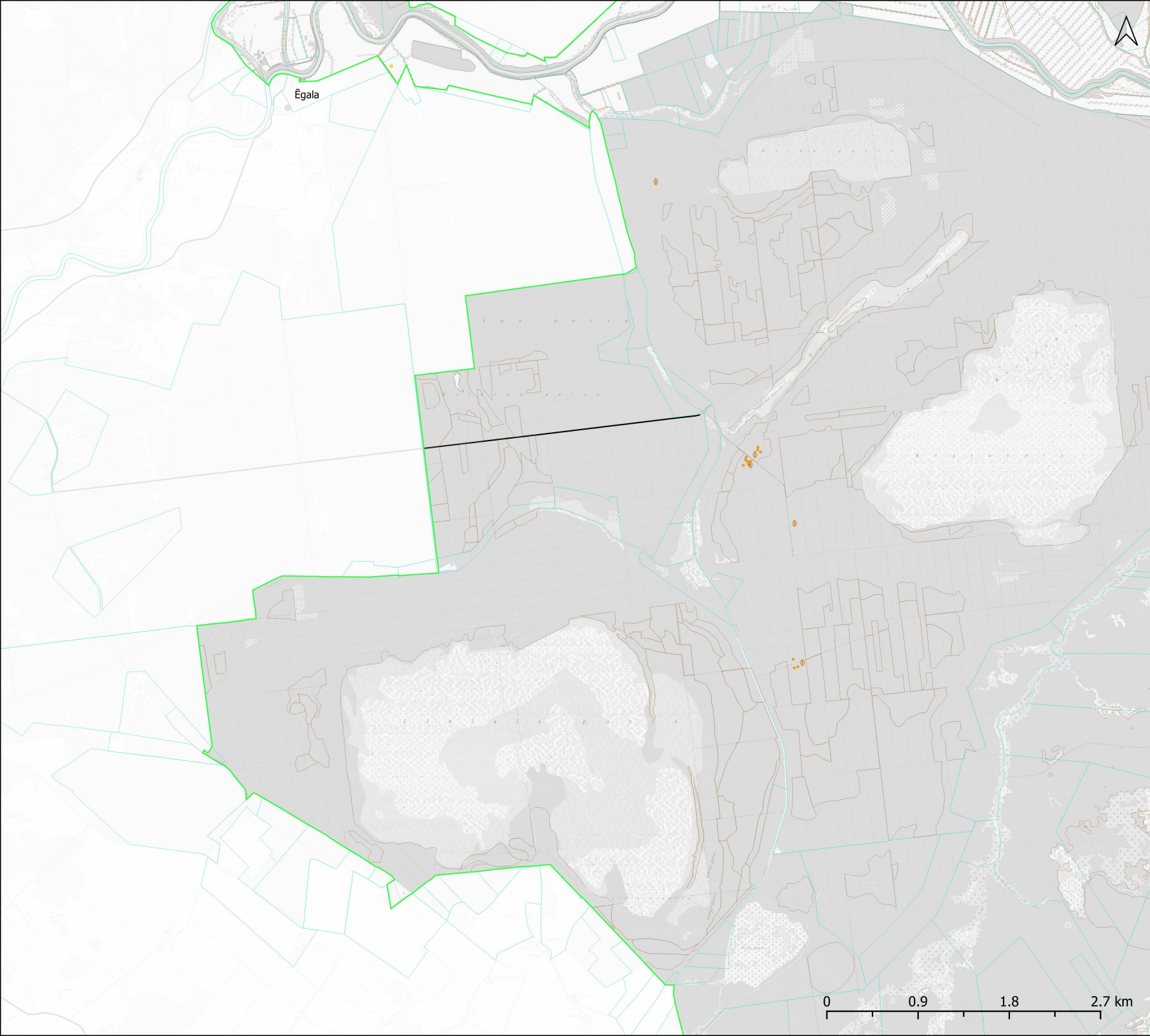
- Dabas lieguma "Lubāna mitrājs" robeža
- ES nozīmes biotopa robeža
- Zemes vienību robeža
- Autoceļš
- Ciems

## Bezmugurkaulnieku dzīvotnes

- Anthrenochernes stellae
- Boros schneideri
- Cucujus cinnaberinus
- Euphydryas aurinia
- Graphoderus bilineatus
- Leucorrhinia pectoralis
- Osmoderma eremita
- Oxyporus mannerheimii

## Bezmugurkaulnieku atradnes

- |  |  |
|--|--|
| <span style="color: yellow;">•</span> Aeshna affinis         | <span style="color: purple;">•</span> Euphydryas aurinia     |
| <span style="color: blue;">•</span> Aeshna isocleles         | <span style="color: orange;">•</span> Graphoderus bilineatus |
| <span style="color: red;">•</span> Aeshna mixta              | <span style="color: blue;">•</span> Laphria gibbosa          |
| <span style="color: purple;">•</span> Aeshna viridis         | <span style="color: red;">•</span> Lasius fuliginosus        |
| <span style="color: green;">•</span> Anthrenochernes stellae | <span style="color: green;">•</span> Leucorrhinia albifrons  |
| <span style="color: blue;">•</span> Apatura ilia             | <span style="color: green;">•</span> Leucorrhinia caudalis   |
| <span style="color: blue;">•</span> Apatura iris             | <span style="color: green;">•</span> Leucorrhinia pectoralis |
| <span style="color: orange;">•</span> Boros schneideri       | <span style="color: blue;">•</span> Libellula fulva          |
| <span style="color: yellow;">•</span> Catocala fraxini       | <span style="color: yellow;">•</span> Limenitis camilla      |
| <span style="color: purple;">•</span> Ceruchus chrysoelinus  | <span style="color: yellow;">•</span> Limenitis populi       |
| <span style="color: orange;">•</span> Chalcophora mariana    | <span style="color: purple;">•</span> Lopinga achine         |
| <span style="color: yellow;">•</span> Clausilia cruciata     | <span style="color: yellow;">•</span> Lycaena dispar         |
| <span style="color: blue;">•</span> Cochlippa nitens         | <span style="color: blue;">•</span> Nehalennia speciosa      |
| <span style="color: red;">•</span> Coenonympha hero          | <span style="color: red;">•</span> Oedipoda caerulea         |
| <span style="color: purple;">•</span> Cucujus cinnaberinus   | <span style="color: purple;">•</span> Ophiogomphus cecilia   |
| <span style="color: green;">•</span> Cucujus haematodes      | <span style="color: green;">•</span> Osmoderma barnabita     |
| <span style="color: green;">•</span> Dolomedes plantarius    | <span style="color: green;">•</span> Papilio machaon         |
| <span style="color: blue;">•</span> Dorcus parallelipipedus  | <span style="color: blue;">•</span> Parmassius mnemosyne     |
| <span style="color: orange;">•</span> Dytiscus latissimus    | <span style="color: yellow;">•</span> Peltis grossa          |
| <span style="color: yellow;">•</span> Epiteca bimaculata     | <span style="color: yellow;">•</span> Prionychus ater        |
|  | <span style="color: purple;">•</span> Protaetia lugubris     |
|  | <span style="color: orange;">•</span> Unio crassus           |



### Apzīmējumi

- Dabas lieguma "Lubāna mitrājs" robeža
- ES nozīmes biotopa robeža
- Zemes vienību robeža
- Autoceļš
- Ciems

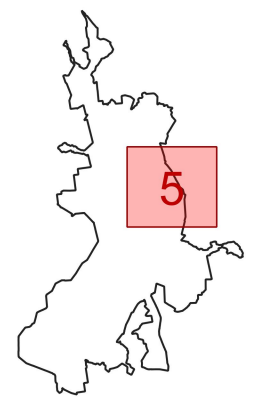
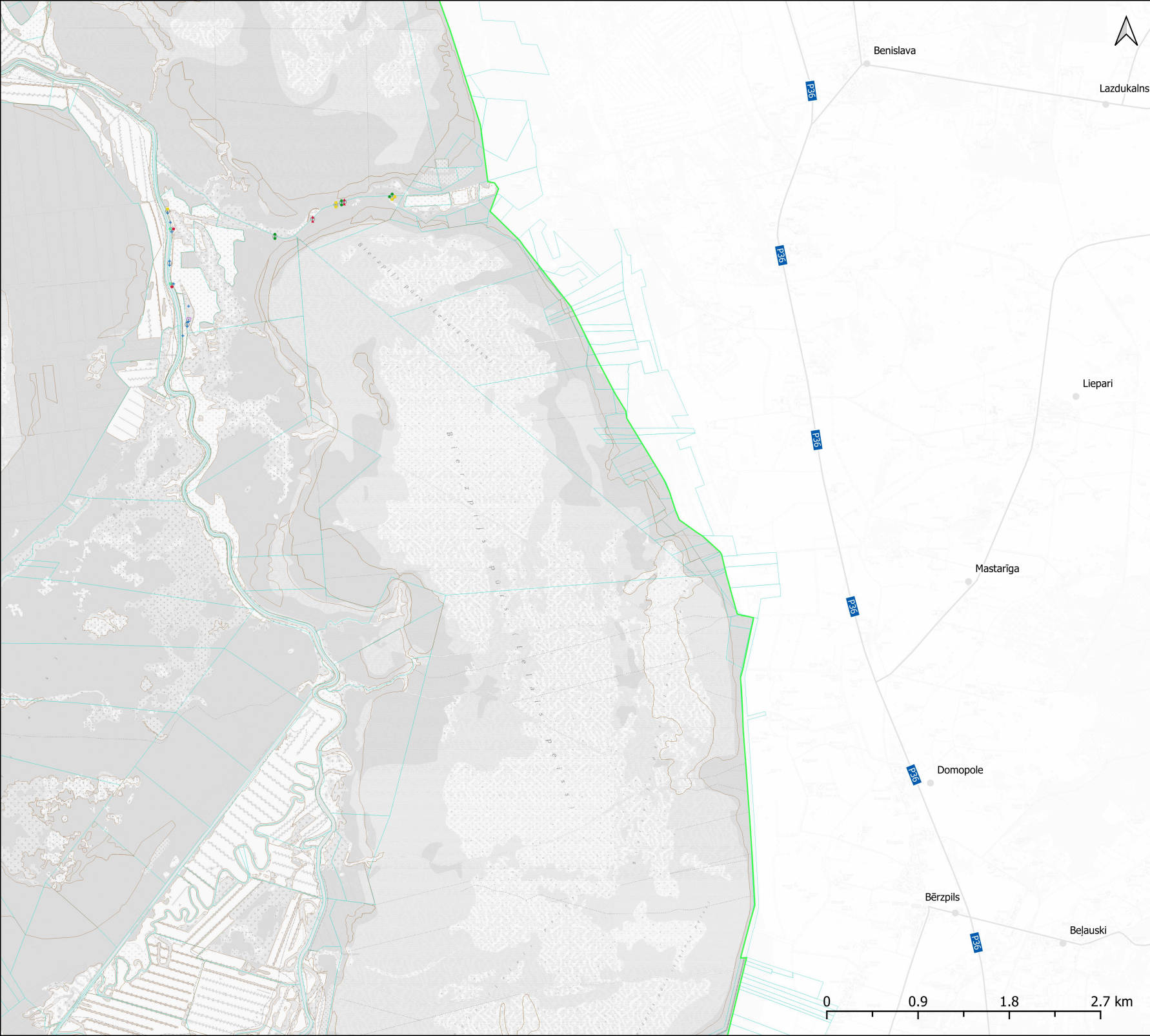
### Bezmugurkaulnieku dzīvotnes

- Anthreochernes stellae
- Boros schneideri
- Cucujus cinnaberinus
- Euphydryas aurinia
- Graphoderus bilineatus
- Leucorrhinia pectoralis
- Osmoderma eremita
- Oxyporus mannerheimii

### Bezmugurkaulnieku atradnes

- Aeshna affinis
- Aeshna isoceles
- Aeshna mixta
- Aeshna viridis
- Anthreochernes stellae
- Apatura ilia
- Apatura iris
- Boros schneideri
- Chalcophora mariana
- Clausilia cruciata
- Cochllicopa nitens
- Coenonympha hero
- Cucujus cinnaberinus
- Cucujus haematodes
- Dolomedes plantarius
- Dorcus parallelipipedus
- Dytiscus latissimus
- Epiteca bimaculata
- Euphydryas aurinia
- Graphoderus bilineatus
- Laphria gibbosa
- Lasius fuliginosus
- Leucorrhinia albifrons
- Leucorrhinia caudalis
- Leucorrhinia pectoralis
- Libellula fulva
- Limenitis camilla
- Limenitis populi
- Lopinga achine
- Lycaena dispar
- Nehalennia speciosa
- Oedipoda caerulea
- Ophiogomphus cecilia
- Osmoderma barnabita
- Papilio machaon
- Parnassius mnemosyne
- Peltis grossa
- Prionychus ater
- Protaetia lugubris
- Unio crassus





### Apzīmējumi

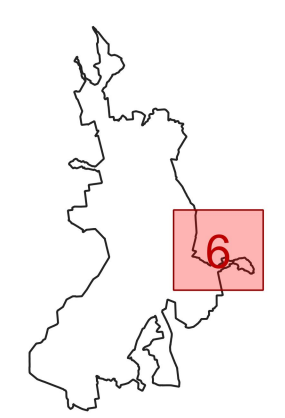
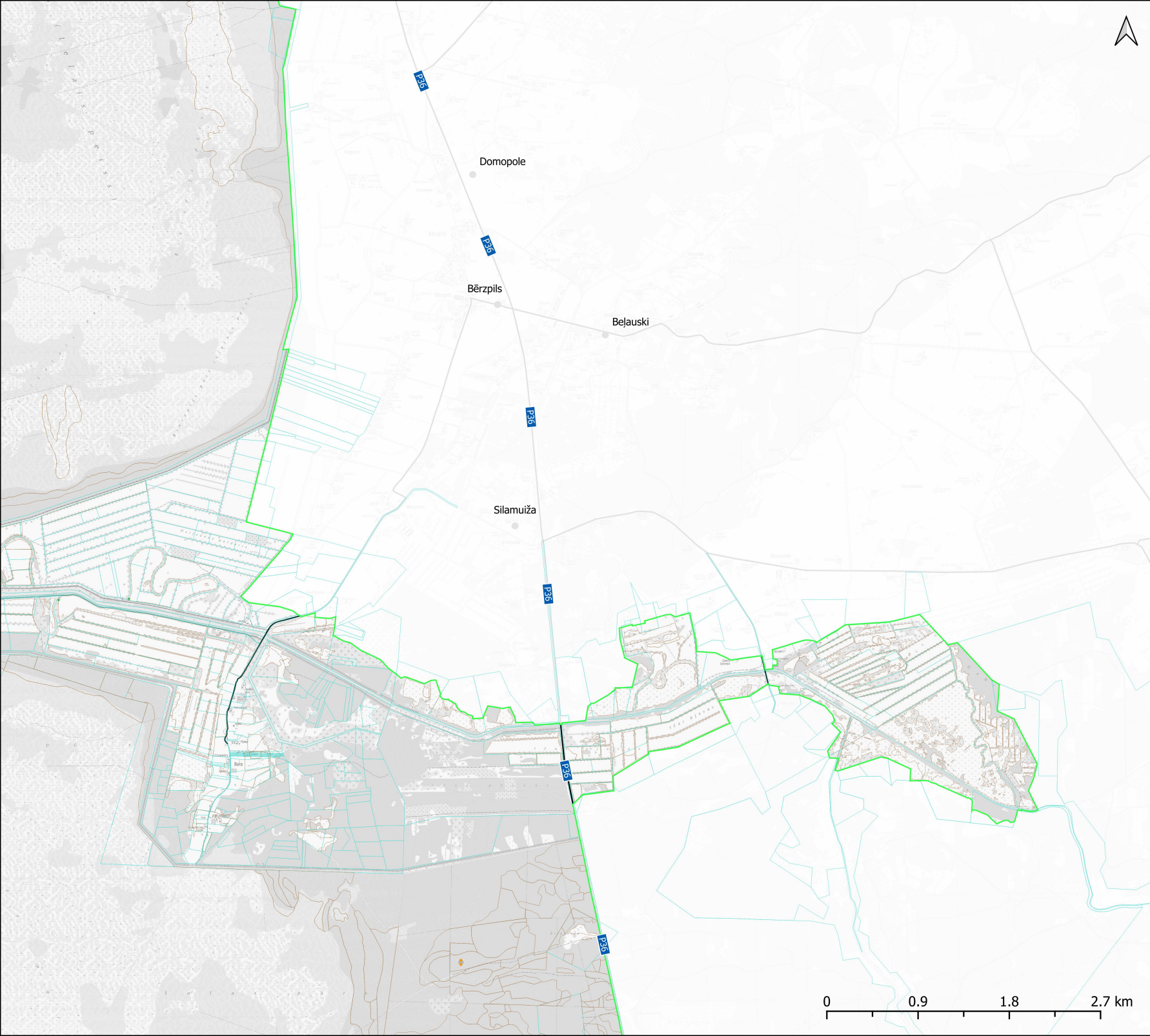
- Dabas lieguma "Lubāna mitrājs" robeža
- ES nozīmes biotopa robeža
- Zemes vienību robeža
- Autoceļš
- Ciems

### Bezmugurkaulnieku dzīvotnes

- Anthrenochernes stellae
- Boros schneideri
- Cucujus cinnaberinus
- Euphydryas aurinia
- Graphoderus bilineatus
- Leucorrhinia pectoralis
- Osmoderma eremita
- Oxyporus mannerheimii

### Bezmugurkaulnieku atradnes

- Aeshna affinis
- Aeshna isocelis
- Aeshna mixta
- Aeshna viridis
- Anthrenochernes stellae
- Apatura ilia
- Apatura iris
- Boros schneideri
- Catocala fraxini
- Ceruchus chrysoelinus
- Chalchophora mariana
- Clausilia cruciata
- Coelicopa nitens
- Coenonympha hero
- Cucujus cinnaberinus
- Cucujus haematodes
- Dolomedes plantarius
- Dorcus parallelipedus
- Dytiscus latissimus
- Epiteca bimaculata
- Euphydryas aurinia
- Graphoderus bilineatus
- Laphria gibbosa
- Lasius fuliginosus
- Leucorrhinia albifrons
- Leucorrhinia caudalis
- Leucorrhinia pectoralis
- Libellula fulva
- Limenitis camilla
- Limenitis populi
- Lopinga achine
- Lycaena dispar
- Nehalennia speciosa
- Oedipoda caerulescens
- Ophiogomphus cecilia
- Osmoderma barnabita
- Papilio machaon
- Parnassius mnemosyne
- Peltis grossa
- Prionychus ater
- Protaetia lugubris
- Unio crassus



### Apzīmējumi

- Dabas lieguma "Lubāna mitrājs" robeža
- ES nozīmes biotopa robeža
- Zemes vienību robeža
- Autoceļš
- Ciems

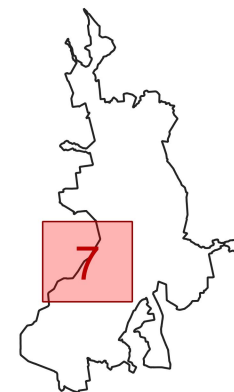
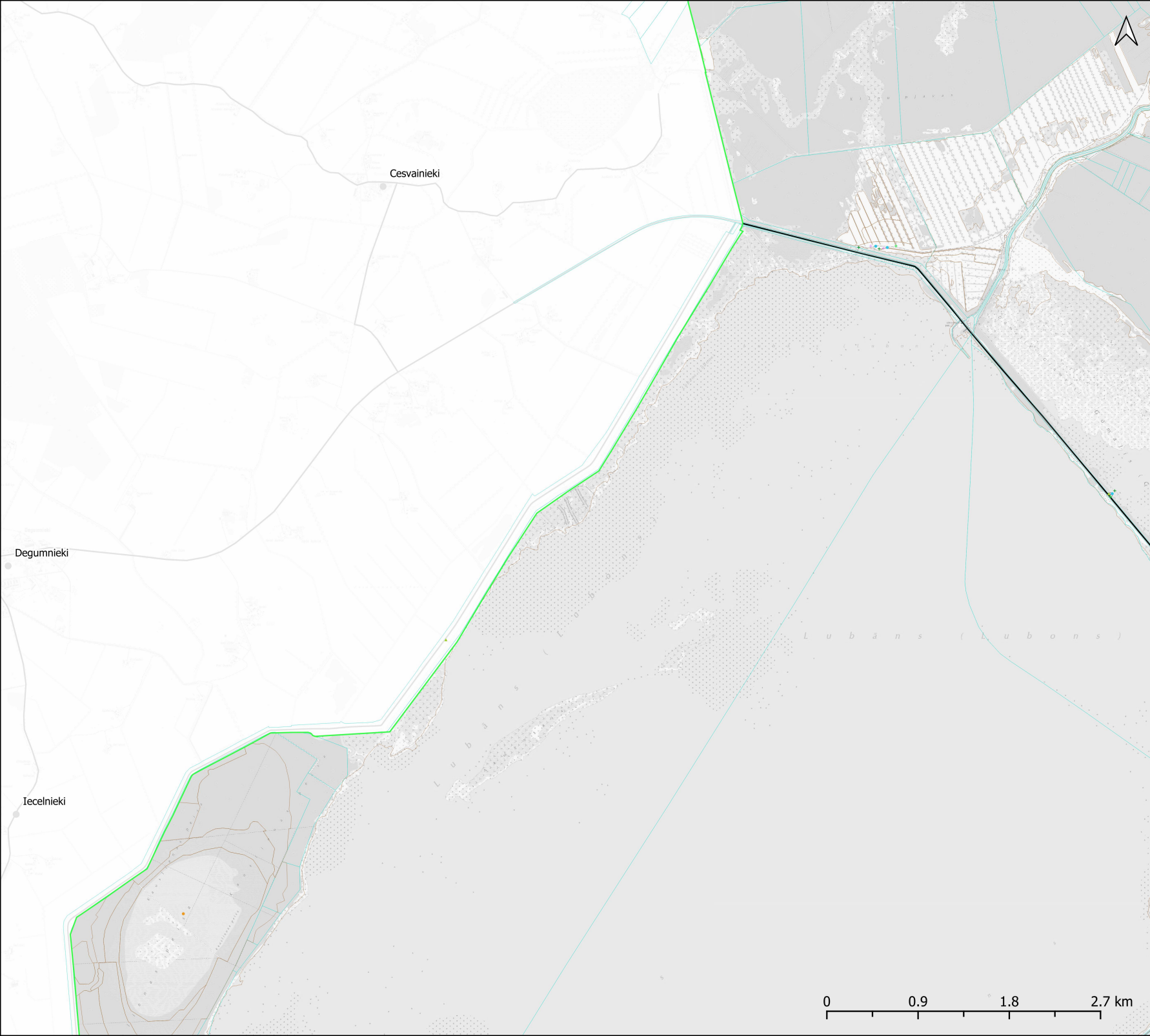
### Bez mugurkaulnieku dzīvotnes

- Anthreochernes stellae*
- Boros schneideri*
- Cucujus cinnaberinus*
- Euphydryas aurinia*
- Graphoderus bilineatus*
- Leucorrhinia pectoralis*
- Osmoderma eremita*
- Oxyporus mannerheimii*

### Bez mugurkaulnieku atradnes

- *Aeshna affinis*
- *Aeshna isoceles*
- *Aeshna mixta*
- *Aeshna viridis*
- *Anthreochernes stellae*
- *Apatura illa*
- *Apatura iris*
- *Boros schneideri*
- *Catocala fraxini*
- *Ceruchus chrysomelinus*
- *Chalcophora mariana*
- *Clausilia cruciata*
- *Cochlicopa nitens*
- *Coenonympha hero*
- *Cucujus cinnaberinus*
- *Cucujus haematodes*
- *Dolomedes plantarius*
- *Dorcus parallelipedus*
- *Dytiscus latissimus*
- *Epitheca bimaculata*
- *Euphydryas aurinia*
- *Graphoderus bilineatus*
- *Laphria gibbosa*
- *Lasius fuliginosus*
- *Leucorrhinia albifrons*
- *Leucorrhinia caudalis*
- *Leucorrhinia pectoralis*
- *Libellula fulva*
- *Limnitis camilla*
- *Limnitis populi*
- *Lopinga achine*
- *Lycaena dispar*
- *Nehalennia speciosa*
- *Oedipoda caerulescens*
- *Ophiogomphus cecilia*
- *Osmoderma barnabita*
- *Papilio machaon*
- *Parnassius mnemosyne*
- *Peltis grossa*
- *Prionychus ater*
- *Protaetia lugubris*
- *Unio crassus*





### Apzīmējumi

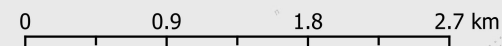
- Dabas lieguma "Lubāna mitrājs" robeža
- ES nozīmes biotopa robeža
- Zemes vienību robeža
- Autoceļš
- Ciems

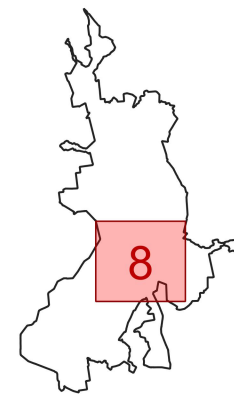
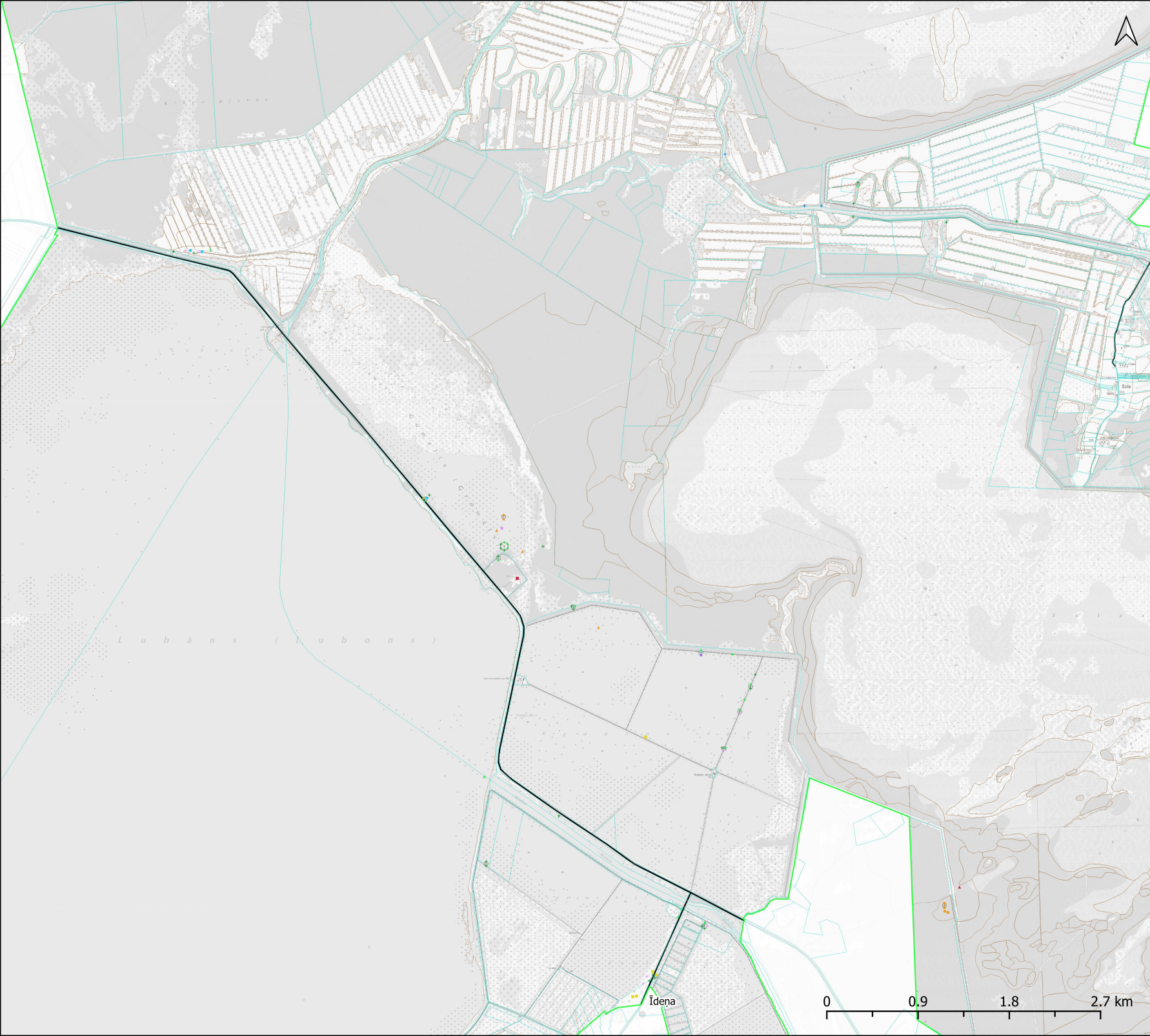
### Bezmugurkaulnieku dzīvotnes

- Anthrenochernes stellae
- Boros schneideri
- Cucujus cinnaberinus
- Euphydryas aurinia
- Graphoderus bilineatus
- Leucorrhinia pectoralis
- Osmoderma eremita
- Oxyporus mannerheimii

### Bezmugurkaulnieku atradnes

- |  |  |
|--|--|
| <span style="color: yellow;">•</span> Aeshna affinis         | <span style="color: purple;">•</span> Euphydryas aurinia     |
| <span style="color: blue;">•</span> Aeshna isoceles          | <span style="color: orange;">•</span> Graphoderus bilineatus |
| <span style="color: red;">•</span> Aeshna mixta              | <span style="color: blue;">•</span> Laphria gibbosa          |
| <span style="color: pink;">•</span> Aeshna viridis           | <span style="color: red;">•</span> Lasius fuliginosus        |
| <span style="color: green;">•</span> Anthrenochernes stellae | <span style="color: green;">•</span> Leucorrhinia albifrons  |
| <span style="color: blue;">•</span> Apatura illa             | <span style="color: purple;">•</span> Leucorrhinia caudalis  |
| <span style="color: blue;">•</span> Apatura iris             | <span style="color: green;">•</span> Leucorrhinia pectoralis |
| <span style="color: orange;">•</span> Boros schneideri       | <span style="color: blue;">•</span> Libellula fulva          |
| <span style="color: yellow;">•</span> Catocala fraxini       | <span style="color: orange;">•</span> Limenitis camilla      |
| <span style="color: purple;">•</span> Ceruchus chrysoelinus  | <span style="color: purple;">•</span> Limenitis populi       |
| <span style="color: orange;">•</span> Chalcophora mariana    | <span style="color: yellow;">•</span> Lopinga achine         |
| <span style="color: yellow;">•</span> Clausilia cruciata     | <span style="color: orange;">•</span> Lycaena dispar         |
| <span style="color: blue;">•</span> Cochlicopa nitens        | <span style="color: blue;">•</span> Nehalennia speciosa      |
| <span style="color: red;">•</span> Coenonympha hero          | <span style="color: red;">•</span> Oedipoda caerulea         |
| <span style="color: purple;">•</span> Cucujus cinnaberinus   | <span style="color: pink;">•</span> Ophiogomphus cecilia     |
| <span style="color: green;">•</span> Cucujus haematodes      | <span style="color: green;">•</span> Osmoderma barnabita     |
| <span style="color: blue;">•</span> Dolomedes plantarius     | <span style="color: blue;">•</span> Papilio machaon          |
| <span style="color: blue;">•</span> Dorcus parallelopedus    | <span style="color: blue;">•</span> Parnassius mnemosyne     |
| <span style="color: orange;">•</span> Dytiscus latissimus    | <span style="color: green;">•</span> Peltis grossa           |
| <span style="color: yellow;">•</span> Epithea bimaculata     | <span style="color: yellow;">•</span> Prionychus ater        |
|  | <span style="color: purple;">•</span> Protaetia lugubris     |
|  | <span style="color: orange;">•</span> Unio crassus           |





### Apzīmējumi

- Dabas lieguma "Lubāna mitrājs" robeža
- ES nozīmes biotopa robeža
- Zemes vienību robeža
- Autoceļš
- Ciems

### Bez mugurkaulnieku dzīvoties

- Anthrenochernes stellae
- Boros schneideri
- Cucujus cinnaberinus
- Euphydryas aurinia
- Graphoderus bilineatus
- Leucorrhinia pectoralis
- Osmoderma eremita
- Oxyporus mannerheimii

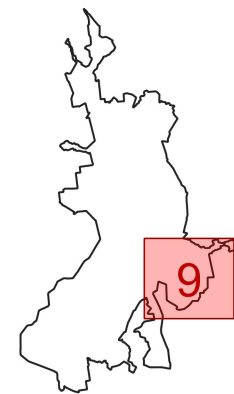
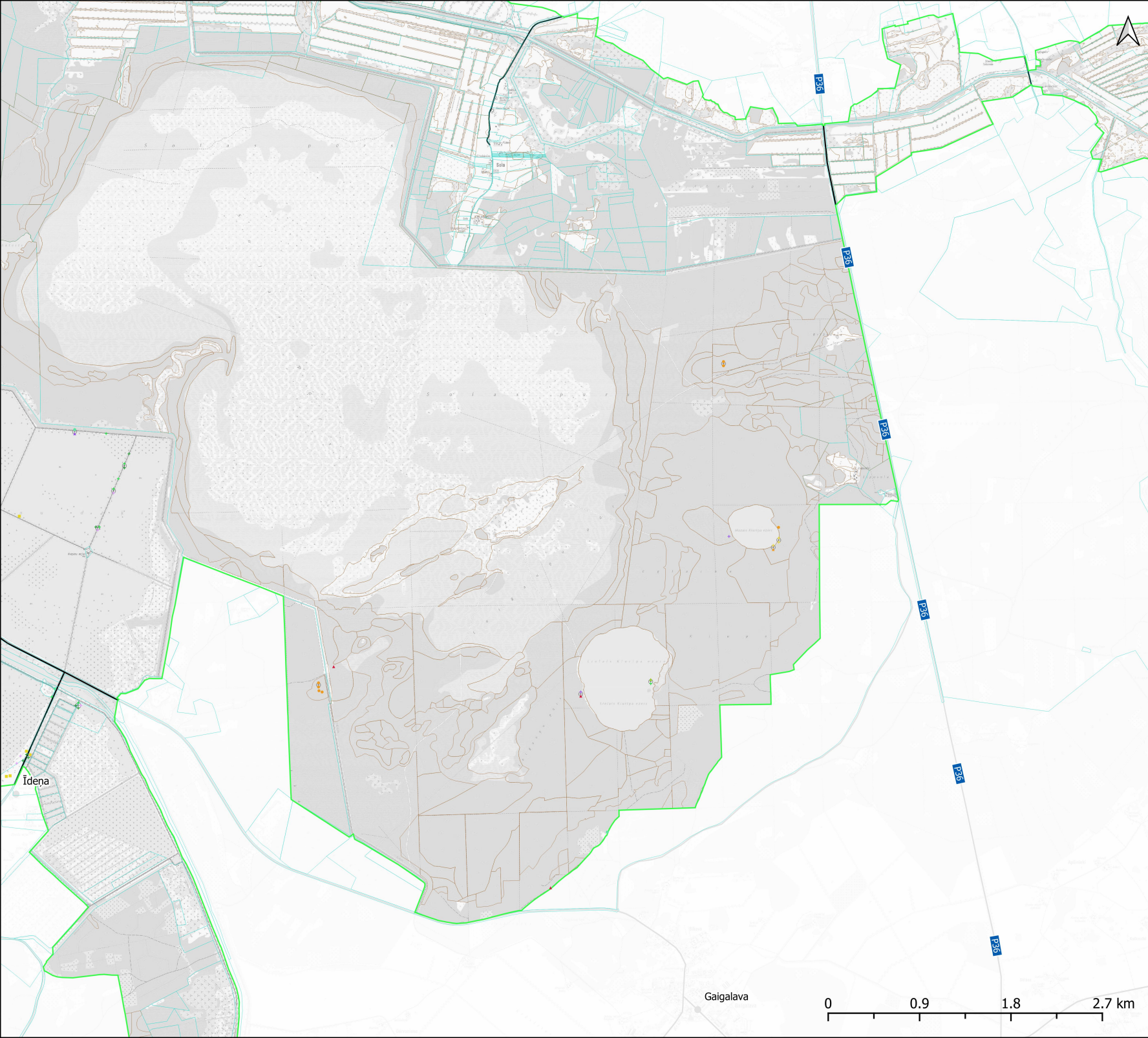
### Bez mugurkaulnieku atradnes

- Aeshna affinis
- Aeshna isoceles
- Aeshna mixta
- Aeshna viridis
- Anthrenochernes stellae
- Apatura ilia
- Apatura iris
- Boros schneideri
- Catocala fraxini
- Ceruchus chrysoelinus
- Chalcophora mariana
- Clausilia cruciata
- Cochllicopa nitens
- Coenonympha hero
- Cucujus cinnaberinus
- Cucujus haematodes
- Dolomedes plantarius
- Dorcus parallelipipedus
- Dytiscus latissimus
- Epiteca bimaculata
- Euphydryas aurinia
- Graphoderus bilineatus
- Laphria gibbosa
- Lasius fuliginosus
- Leucorrhinia albifrons
- Leucorrhinia caudalis
- Leucorrhinia pectoralis
- Libellula fulva
- Limenitis camilla
- Limenitis populi
- Lopinga achine
- Lycaena dispar
- Nehalennia speciosa
- Oedipoda caerulea
- Ophiogomphus cecilia
- Osmoderma barnabita
- Papilio machaon
- Parnassius mnemosyne
- Peltis grossa
- Prionychus ater
- Protaetia lugubris
- Unio crassus

Īdēna







## Apzīmējumi

- Dabas lieguma "Lubāna mitrājs" robeža
- ES nozīmes biotopa robeža
- Zemes vienību robeža
- Autoceļš
- Ciems

## Bezmugurkaulnieku dzīvotnes

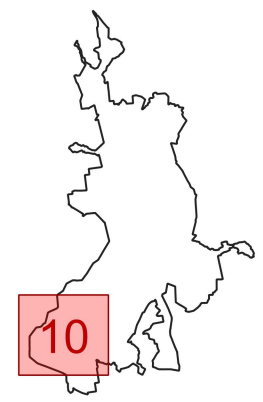
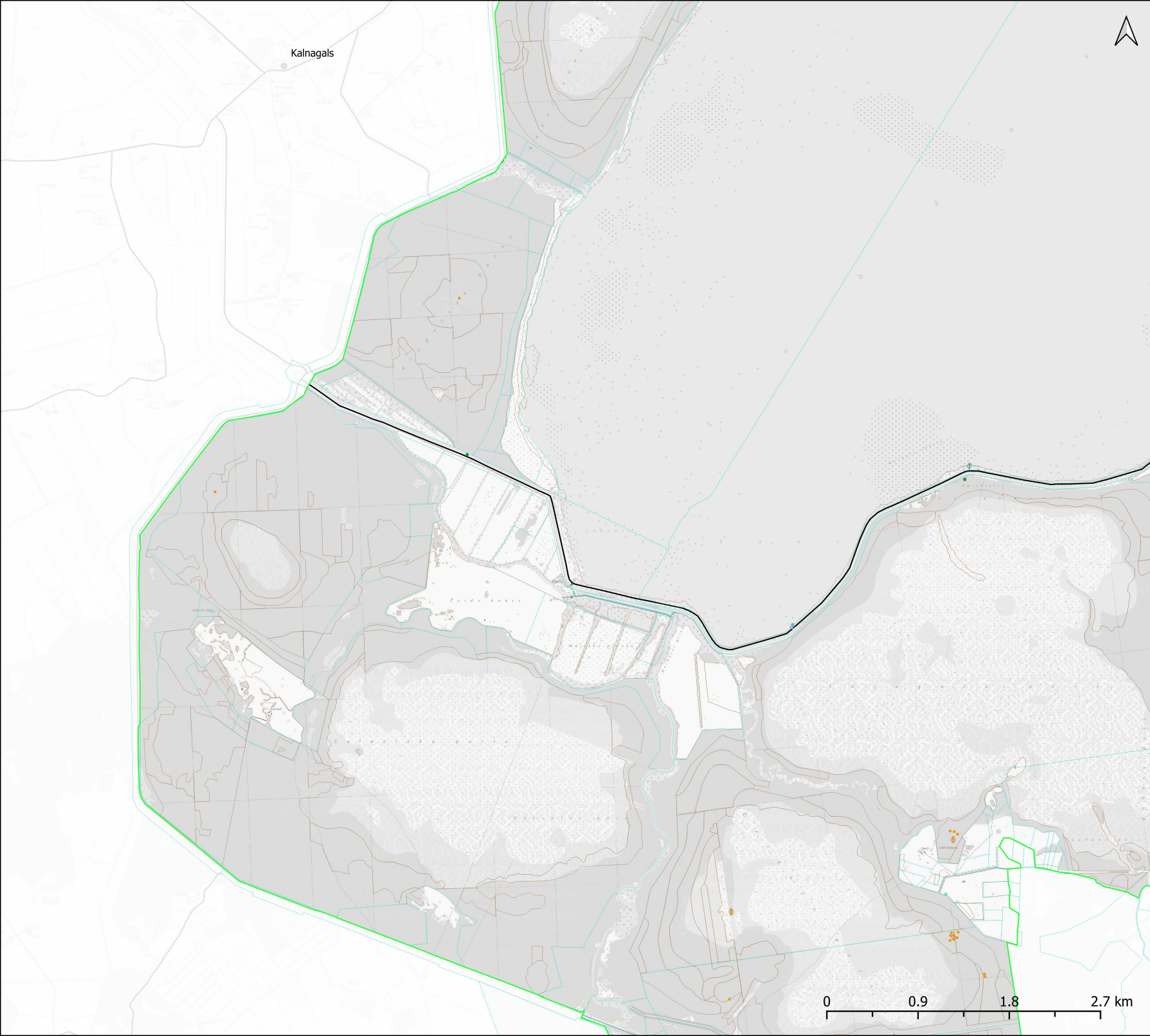
- Anthrenochernes stellae
- Boros schneideri
- Cucujus cinnaberinus
- Euphydryas aurinia
- Graphoderus bilineatus
- Leucorrhinia pectoralis
- Osmoderma eremita
- Oxyporus mannerheimii

## Bezmugurkaulnieku atradnes

- Aeshna affinis
- Aeshna isoceles
- Aeshna mixta
- Aeshna viridis
- Anthrenochernes stellae
- Apatura ilia
- Apatura iris
- Boros schneideri
- Catocala fraxini
- Ceruchus chrysoelinus
- Chalcophora mariana
- Clausilia cruciata
- Cochlicopa nitens
- Coenonympha hero
- Cucujus cinnaberinus
- Cucujus haematodes
- Dolomedes plantarius
- Dorcus parallelipipedus
- Dytiscus latissimus
- Epiteca bimaculata
- Euphydryas aurinia
- Graphoderus bilineatus
- Laphria gibbosa
- Lasius fuliginosus
- Leucorrhinia albifrons
- Leucorrhinia caudalis
- Leucorrhinia pectoralis
- Libellula fulva
- Limenitis camilla
- Limenitis populi
- Lopinga achine
- Lycaena dispar
- Nehalennia speciosa
- Oedipoda caerulescens
- Ophiogomphus cecilia
- Osmoderma barnabita
- Papilio machaon
- Parnassius mnemosyne
- Peltis grossa
- Prionychus ater
- Protaetia lugubris
- Unio crassus

Gaigalava

0 0.9 1.8 2.7 km



### Apzīmējumi

- Dabas lieguma "Lubāna mitrājs" robeža
- ES nozīmes biotopa robeža
- Zemes vienību robeža
- Autoceļš
- Ciems

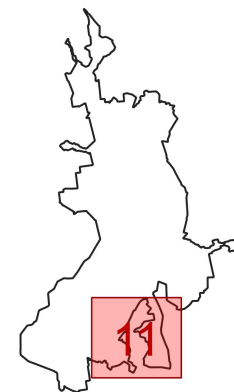
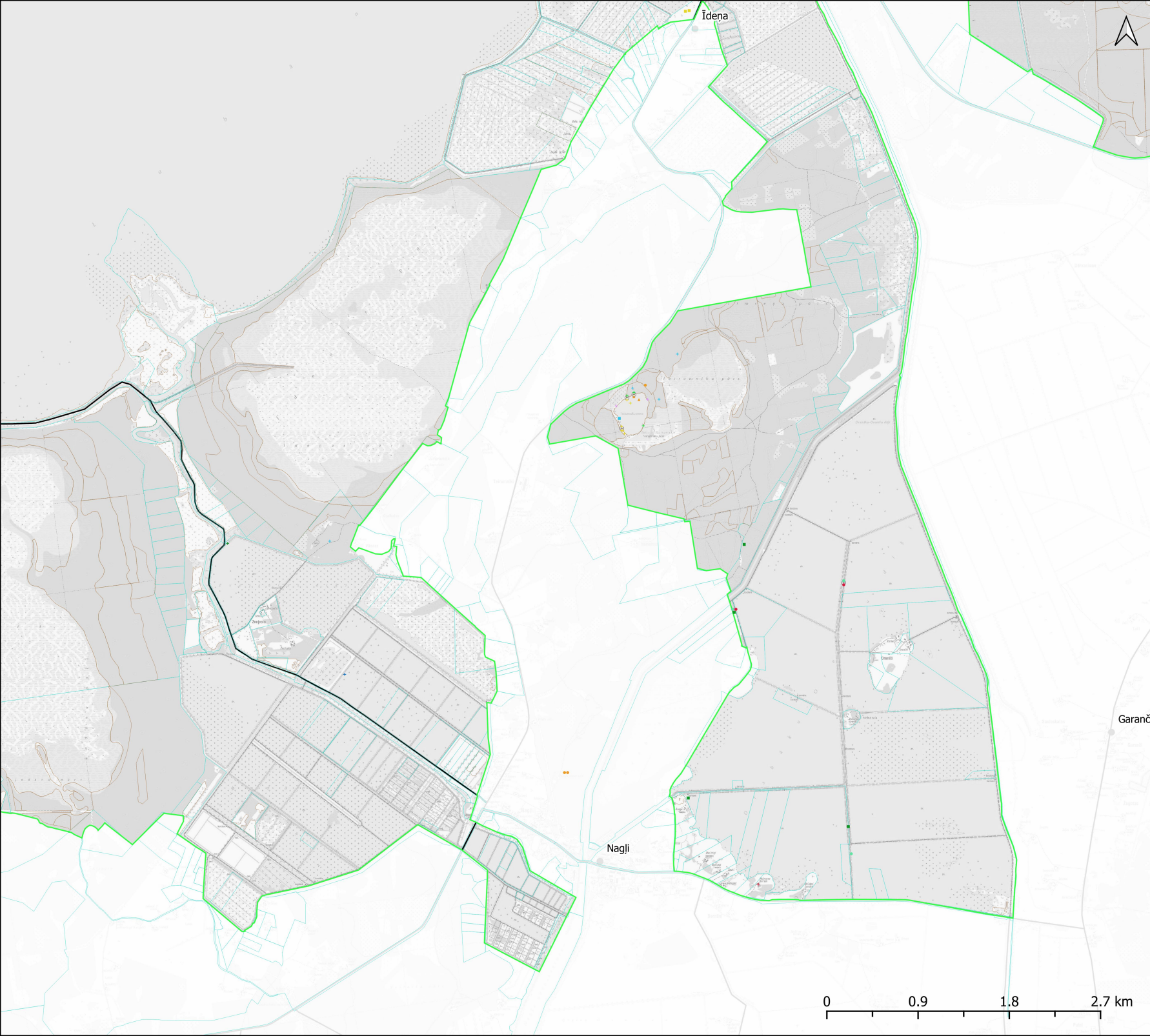
### Bezmugurkaulnieku dzīvotnes

- Anthreochernes stellae
- Boros schneideri
- Cucujus cinnaberinus
- Euphydryas aurinia
- Graphoderus bilineatus
- Leucorrhinia pectoralis
- Osmoderma eremita
- Oxyporus mannerheimii

### Bezmugurkaulnieku atradnes

- Aeshna affinis
- Aeshna isocleles
- Aeshna mixta
- Aeshna viridis
- Anthreochernes stellae
- Apatura ilia
- Apatura iris
- Boros schneideri
- Catocala fraxini
- Ceruchus chrysolinus
- Chalcophora mariana
- Clausilia cruciata
- Cochlicopa nitens
- Coenonympha hero
- Cucujus cinnaberinus
- Cucujus haematodes
- Dolomedes plantarius
- Dorcus parallelipipedus
- Dytiscus latissimus
- Epiteca bimaculata
- Euphydryas aurinia
- Graphoderus bilineatus
- Laphria gibbosa
- Lasius fuliginosus
- Leucorrhinia albifrons
- Leucorrhinia caudalis
- Leucorrhinia pectoralis
- Libellula fulva
- Limenitis camilla
- Limenitis populi
- Lopinga achine
- Lycaena dispar
- Nehalennia speciosa
- Oedipoda caerulescens
- Ophiogomphus cecilia
- Osmoderma barnabita
- Papilio machaon
- Parnassius mnemosyne
- Peltis grossa
- Prionychus ater
- Protaetia lugubris
- Unio crassus





### Apzīmējumi

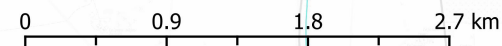
- Dabas lieguma "Lubāna mitrājs" robeža
- ES nozīmes biotopa robeža
- Zemes vienību robeža
- Autoceļš
- Ciems

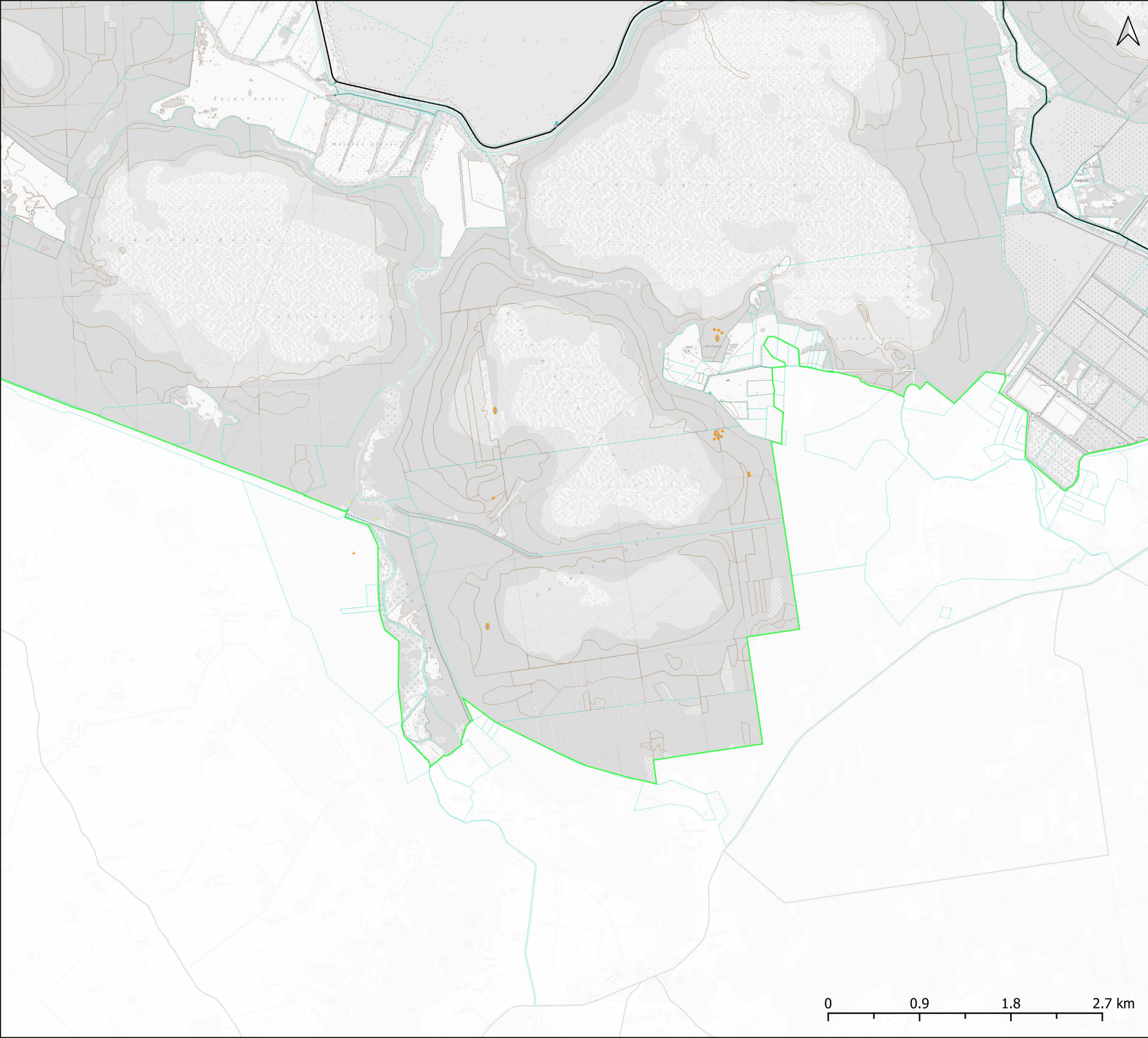
### Bezmugurkaulnieku dzīvotnes

- Anthreochernes stellae
- Boros schneideri
- Cucujus cinnaberinus
- Euphydryas aurinia
- Graphoderus bilineatus
- Leucorrhinia pectoralis
- Osmoderma eremita
- Oxyporus mannerheimii

### Bezmugurkaulnieku atradnes

- Aeshna affinis
- Aeshna isoceles
- Aeshna mixta
- Aeshna viridis
- Anthreochernes stellae
- Apatura ilia
- Apatura iris
- Boros schneideri
- Catocala fraxini
- Ceruchus chrysoelinus
- Chalcophora mariana
- Clausilia cruciata
- Cochlippa nitens
- Coenonympha hero
- Cucujus cinnaberinus
- Cucujus haematodes
- Dolomedes plantarius
- Dorcus parallelipipedus
- Dytiscus latissimus
- Epiteca bimaculata
- Euphydryas aurinia
- Graphoderus bilineatus
- Laphria gibbosa
- Lasius fuliginosus
- Leucorrhinia albifrons
- Leucorrhinia caudalis
- Leucorrhinia pectoralis
- Libellula fulva
- Limenitis camilla
- Limenitis populi
- Lopinga achine
- Lycaena dispar
- Nehalennia speciosa
- Oedipoda caerulescens
- Ophiogomphus cecilia
- Osmoderma barnabita
- Papilio machaon
- Parnassius mnemosyne
- Peltis grossa
- Prionychus ater
- Protaetia lugubris
- Unio crassus





### Apzīmējumi

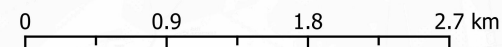
- Dabas lieguma "Lubāna mitrājs" robeža
- ES nozīmes biotopa robeža
- Zemes vienību robeža
- Autoceļš
- Ciems

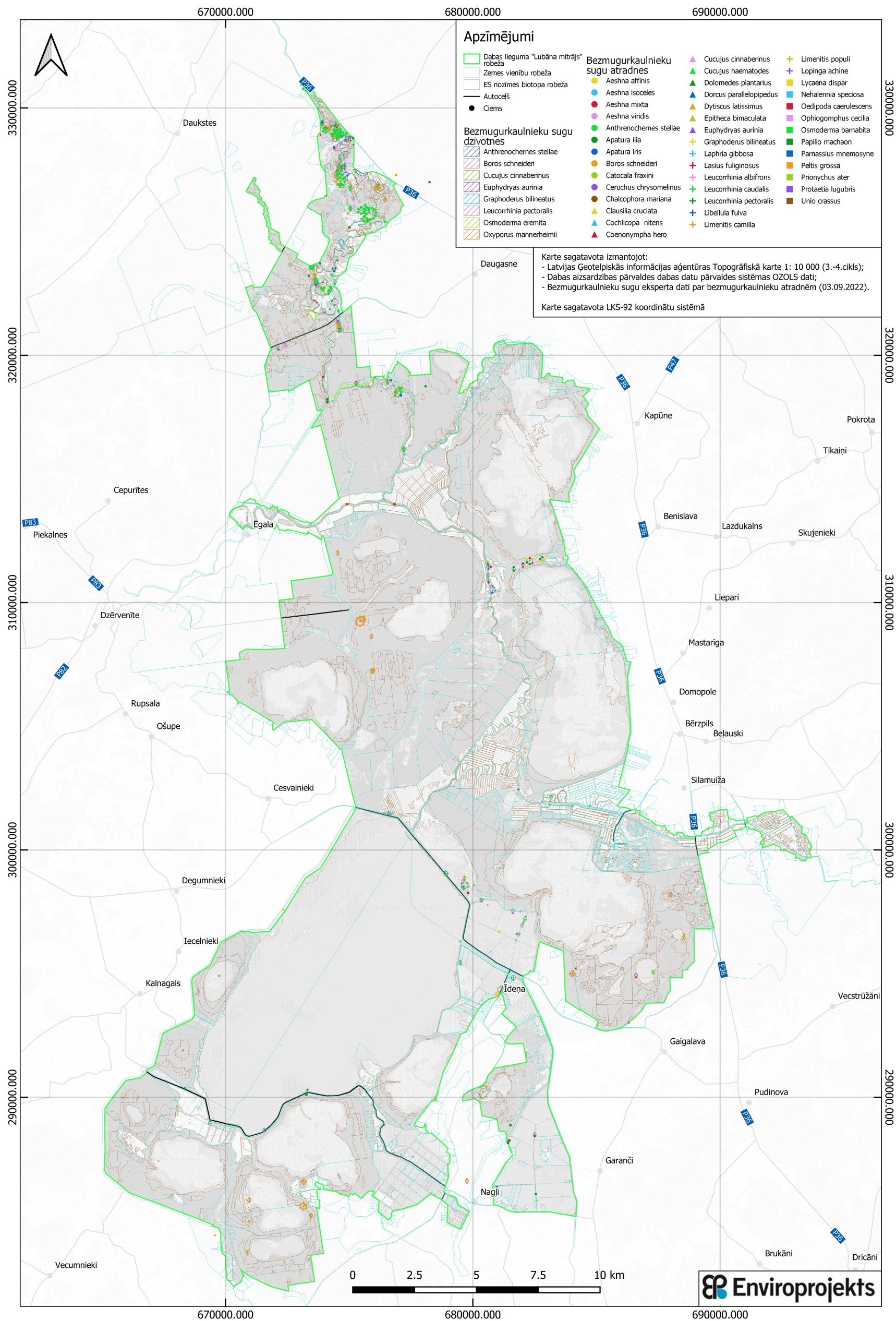
### Bezmugurkaulnieku dzīvoties

- Anthrenochernes stellae
- Boros schneideri
- Cucujus cinnaberinus
- Euphydryas aurinia
- Graphoderus bilineatus
- Leucorrhinia pectoralis
- Osmoderma eremita
- Oxyporus mannerheimii

### Bezmugurkaulnieku atradnes

- |  |  |
|--|--|
| <span style="color: blue;">•</span> Aeshna affinis           | <span style="color: purple;">+</span> Euphydryas aurinia     |
| <span style="color: blue;">•</span> Aeshna isocles           | <span style="color: orange;">+</span> Graphoderus bilineatus |
| <span style="color: red;">•</span> Aeshna mixta              | <span style="color: blue;">+</span> Laphria gibbosa          |
| <span style="color: purple;">•</span> Aeshna viridis         | <span style="color: red;">+</span> Lasius fuliginosus        |
| <span style="color: green;">•</span> Anthrenochernes stellae | <span style="color: pink;">+</span> Leucorrhinia albifrons   |
| <span style="color: blue;">•</span> Apatura ilia             | <span style="color: green;">+</span> Leucorrhinia caudalis   |
| <span style="color: blue;">•</span> Apatura iris             | <span style="color: blue;">+</span> Leucorrhinia pectoralis  |
| <span style="color: orange;">•</span> Boros schneideri       | <span style="color: blue;">+</span> Libellula fulva          |
| <span style="color: green;">•</span> Catocala fraxini        | <span style="color: orange;">+</span> Limenitis camilla      |
| <span style="color: purple;">•</span> Ceruchus chrysoelinus  | <span style="color: blue;">+</span> Lopinga achine           |
| <span style="color: orange;">•</span> Chalcophora mariana    | <span style="color: yellow;">+</span> Lycaena dispar         |
| <span style="color: yellow;">•</span> Clausilia cruciata     | <span style="color: blue;">+</span> Nehalennia speciosa      |
| <span style="color: blue;">•</span> Cochlicopa nitens        | <span style="color: red;">+</span> Oedipoda caerulea         |
| <span style="color: red;">•</span> Coenonympha hero          | <span style="color: purple;">+</span> Ophiogomphus cecilia   |
| <span style="color: purple;">•</span> Cucujus cinnaberinus   | <span style="color: green;">+</span> Osmoderma barnabita     |
| <span style="color: green;">•</span> Cucujus haematodes      | <span style="color: blue;">+</span> Papilio machaon          |
| <span style="color: blue;">•</span> Dolomedes plantarius     | <span style="color: blue;">+</span> Parnassius mnemosyne     |
| <span style="color: blue;">•</span> Dorcus parallelipedus    | <span style="color: yellow;">+</span> Peltis grossa          |
| <span style="color: orange;">•</span> Dytiscus latissimus    | <span style="color: green;">+</span> Prionychus ater         |
| <span style="color: yellow;">•</span> Epithea bimaculata     | <span style="color: purple;">+</span> Protaetia lugubris     |
|  | <span style="color: orange;">+</span> Unio crassus           |





### Apzīmējumi

- |  |  |   |
|--|--|---|
| <ul style="list-style-type: none"> <li><span style="border: 1px solid green; display: inline-block; width: 10px; height: 10px; margin-right: 5px;"></span> Dabas lieguma "Lubāna mitrājs" robeža</li> <li><span style="border: 1px solid lightblue; display: inline-block; width: 10px; height: 10px; margin-right: 5px;"></span> Zemes vienību robeža</li> <li><span style="border: 1px solid lightgrey; display: inline-block; width: 10px; height: 10px; margin-right: 5px;"></span> ES nozīmes biotopa robeža</li> <li><span style="border-bottom: 1px solid black; display: inline-block; width: 10px; margin-right: 5px;"></span> Autoceļš</li> <li><span style="display: inline-block; width: 5px; height: 5px; background-color: black; border-radius: 50%; margin-right: 5px;"></span> Ciems</li> </ul> | <h4>Bezmugurkaulnieku sugu dzīvotnes</h4> <ul style="list-style-type: none"> <li><span style="border: 1px solid blue; display: inline-block; width: 10px; height: 10px; margin-right: 5px;"></span> Anthrenochemes stellae</li> <li><span style="border: 1px solid orange; display: inline-block; width: 10px; height: 10px; margin-right: 5px;"></span> Boros schneideri</li> <li><span style="border: 1px solid green; display: inline-block; width: 10px; height: 10px; margin-right: 5px;"></span> Cucujus cinnaberinus</li> <li><span style="border: 1px solid blue; display: inline-block; width: 10px; height: 10px; margin-right: 5px;"></span> Graphoderus bilineatus</li> <li><span style="border: 1px solid purple; display: inline-block; width: 10px; height: 10px; margin-right: 5px;"></span> Leucorrhinia pectoralis</li> <li><span style="border: 1px solid yellow; display: inline-block; width: 10px; height: 10px; margin-right: 5px;"></span> Osmoderma eremita</li> <li><span style="border: 1px solid brown; display: inline-block; width: 10px; height: 10px; margin-right: 5px;"></span> Oxyporus mannerheimii</li> </ul> | <h4>Bezmugurkaulnieku sugu atradnes</h4> <ul style="list-style-type: none"> <li><span style="color: yellow;">●</span> Aeshna affinis</li> <li><span style="color: red;">●</span> Aeshna isocetes</li> <li><span style="color: blue;">●</span> Aeshna mixta</li> <li><span style="color: purple;">●</span> Aeshna viridis</li> <li><span style="color: green;">●</span> Anthrenochemes stellae</li> <li><span style="color: blue;">●</span> Apatura illa</li> <li><span style="color: blue;">●</span> Apatura iris</li> <li><span style="color: orange;">●</span> Boros schneideri</li> <li><span style="color: purple;">●</span> Catocala fraxini</li> <li><span style="color: purple;">●</span> Ceruchus chrysomelinus</li> <li><span style="color: brown;">●</span> Chalcophora mariana</li> <li><span style="color: yellow;">▲</span> Clausilia cruciata</li> <li><span style="color: red;">▲</span> Cochlicopa nitens</li> <li><span style="color: blue;">▲</span> Coenonympha hero</li> <li><span style="color: purple;">▲</span> Cucujus cinnaberinus</li> <li><span style="color: green;">▲</span> Cucujus haematodes</li> <li><span style="color: blue;">▲</span> Dolomedes plantarius</li> <li><span style="color: blue;">▲</span> Dorcus parallelipedus</li> <li><span style="color: yellow;">▲</span> Dytiscus latissimus</li> <li><span style="color: green;">▲</span> Epitheca bimaculata</li> <li><span style="color: purple;">▲</span> Euphydryas aurinia</li> <li><span style="color: purple;">+</span> Graphoderus bilineatus</li> <li><span style="color: blue;">+</span> Laphria gibbosa</li> <li><span style="color: red;">+</span> Lasius fuliginosus</li> <li><span style="color: purple;">+</span> Leucorrhinia albifrons</li> <li><span style="color: green;">+</span> Leucorrhinia caudalis</li> <li><span style="color: green;">+</span> Leucorrhinia pectoralis</li> <li><span style="color: blue;">+</span> Libellula fulva</li> <li><span style="color: orange;">+</span> Limenitis camilla</li> <li><span style="color: purple;">+</span> Limenitis populi</li> <li><span style="color: purple;">+</span> Lopinga achine</li> <li><span style="color: yellow;">+</span> Lycaena dispar</li> <li><span style="color: blue;">+</span> Nehalennia speciosa</li> <li><span style="color: red;">+</span> Oedipoda caerulescens</li> <li><span style="color: purple;">+</span> Ophiogomphus cecilia</li> <li><span style="color: green;">+</span> Osmoderma bamabita</li> <li><span style="color: blue;">+</span> Papilio machaon</li> <li><span style="color: orange;">+</span> Pamassius mnemosyne</li> <li><span style="color: yellow;">+</span> Peltis grossa</li> <li><span style="color: green;">+</span> Prionychus ater</li> <li><span style="color: purple;">+</span> Protactia lugubris</li> <li><span style="color: brown;">+</span> Unio crassus</li> </ul> |
|--|--|---|

Karte sagatavota izmantojot:  
 - Latvijas Ģeotelpiskās informācijas aģentūras Topogrāfiskā karte 1: 10 000 (3.-4.cikls);  
 - Dabas aizsardzības pārvaldes dabas datu pārvaldes sistēmas OZOLS dati;  
 - Bezmugurkaulnieku sugu eksperta dati par bezmugurkaulnieku atradnēm (03.09.2022).

Karte sagatavota LKS-92 koordinātu sistēmā

