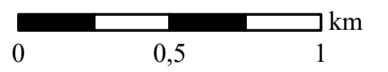


4.5. PIELIKUMS. RETAS UN AIZSARGĀJAMAS AUGU SUGAS AIZSARGĀJAMO AINAVU APVIDŪ "AUGŠDAUGAVA"

Mērogs: 1:25 000

Apzīmējumi

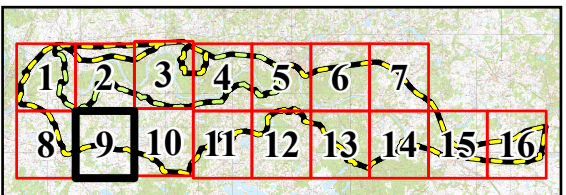
1 Aconitum lasiostomum	21 Crepis praemorsa	41 Gratiola officinalis	61 Najas minor	81 Seseli libanotis	101 Gentiana cruciata
2 Agrimonia pilosa	22 Cucubalus baccifer	42 Gypsophila fastigiata	62 Neottianthe cucullata	82 Silene chlorantha	102 Helianthemum nummularium
3 Ajuga pyramidalis	23 Cyperus fuscus	43 Hammarbya paludosa	63 Onobrychis arenaria	83 Silene tatarica	103 Inula britannica
4 Allium schoenoprasum	24 Dactylorhiza baltica	44 Helianthemum nummularium	64 Orobanche coerulescens	84 Stellaria crassifolia	104 Lathyrus pisiformis
5 Allium vineale	25 Dactylorhiza incarnata	45 Huperzia selago	65 Orobanche pallidiflora	85 Trifolium alpestre	105 Lunaria rediviva
6 Anemone sylvestris	26 Dactylorhiza maculata	46 Hydrilla verticillata	66 Peucedanum oreoselinum	86 Trifolium dubium	106 Lycopodium annotinum
7 Arenaria stenophylla	27 Delphinium elatum	47 Inula britannica	67 Pimpinella major	87 Vicia tenuifolia	107 Lycopodium clavatum
8 Botrychium multifidum	28 Dianthus arenarius	48 Iris sibirica	68 Platanthera bifolia	88 Vincetoxicum hirundinaria	108 Myosotis sparsiflora
9 Bromopsis benekenii	29 Digitalis grandiflora	49 Jovibarba globifera	69 Polygonum mite	89 Vincetoxicum hirundinaria	109 Neothianta cucullata
10 Carex atherodes	30 Diphasiastrum complanatum	50 Jovibarba sobolifera	70 Potamogeton rutilus	90 Agrimonia pilosa	110 Pulmonaria angustifolia
11 Carex montana	31 Diphasiastrum tristachyum	51 Lathyrus pisiformis	71 Pulmonaria angustifolia	91 Ajuga pyramidalis	111 Pulsatilla patens
12 Carex pilosa	32 Diphasiastrum complanatum	52 Linnaea borealis	72 Pulsatilla patens	92 Allium schoenoprasum	112 Pulsatilla pratensis
13 Carex rhizina	33 Draba nemorosa	53 Liparis loeselii	73 Pulsatilla pratensis	93 Arenaria procera	113 Ranunculus lanuginosus
14 Cenolophium denudatum	34 Dracocephalum ruyschiana	54 Listeria cordata	74 Pyrola media	94 Carex rhizina	114 Saxifraga hirculus
15 Centaurium pulchellum	35 Euonymus verrucosa	55 Lunaria rediviva	75 Ramunculus bulbosus	95 Cucubalus baccifer	115 Silene tatarica
16 Chaerophyllum hirsutum	36 Galium schultesii	56 Lycopodium annotinum	76 Ramunculus lanuginosus	96 Digitalis grandiflora	116 Trifolium alpestre
17 Circaea lutetiana	37 Gentiana cruciata	57 Lycopodium clavatum	77 Rosa sherardii	97 Diphasiastrum complanatum	117 Vicia tenuifolia
18 Conioselinum tataricum	38 Gladiolus imbricatus	58 Myosotis sparsiflora	78 Saxifraga hirculus	98 Euonymus verrucosus	118 Najas major



Karšu lapa no9 līdz 16

Karte piesaistīta Latvijas koordinātu sistēmai (LKS-92) TM projekcijā.

Par kartogrāfisko pamatni izmantota LGIA sagatavotā ortofoto karte mēroga 1:10 000 (2017. gads).



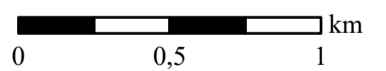


4.5. PIELIKUMS. RETAS UN AIZSARGĀJAMAS AUGU SUGAS AIZSARGĀJAMO AINAVU APVIDŪ "AUGŠDAUGAVA"

Mērogs: 1:25 000

Apzīmējumi

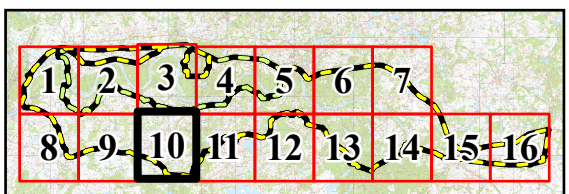
1 Aconitum lasiostomum	17 Crepis praemorsa	33 Gratiola officinalis	50 Najas minor	66 Seseli libanotis	82 Gentiana cruciata
2 Agrimonia pilosa	18 Cucubalus baccifer	34 Gypsophila fastigiata	51 Neottianthe cucullata	67 Silene chlorantha	83 Helianthemum nummularium
3 Ajuga pyramidalis	19 Cyperus fuscus	35 Hammarbya paludosa	52 Onobrychis arenaria	68 Silene tatarica	84 Inula britannica
4 Allium schoenoprasum	20 Dactylorhiza baltica	36 Helianthemum nummularium	53 Orobanche coerulescens	69 Stellaria crassifolia	85 Lathyrus pisiformis
5 Allium vineale	21 Dactylorhiza incarnata	37 Huperzia selago	54 Orobanche pallidiflora	70 Trifolium alpestre	86 Lunaria rediviva
6 Anemone sylvestris	22 Dactylorhiza maculata	38 Hydrilla verticillata	55 Peucedanum oreoselinum	71 Trifolium dubium	87 Lycopodium annotinum
7 Arenaria stenophylla	23 Delphinium elatum	39 Inula britannica	56 Pimpinella major	72 Vicia tenuifolia	88 Lycopodium clavatum
8 Botrychium multifidum	24 Dianthus arenarius	40 Iris sibirica	57 Platanthera bifolia	73 Vincetoxicum hirsutinaria	89 Myosotis sparsiflora
9 Bromopsis benekenii	25 Digitalis grandiflora	41 Jovibarba globifera	58 Polygonum mite	74 Vincetoxicum hirsutinaria	90 Neothianta cucullata
10 Carex atherodes	26 Diphasiastrum complanatum	42 Jovibarba sobolifera	59 Potamogeton rutilus	75 Agrimonia pilosa	91 Pulmonaria angustifolia
11 Carex montana	27 Diphasiastrum tristachyum	43 Lathyrus pisiformis	60 Pulmonaria angustifolia	76 Ajuga pyramidalis	92 Pulsatilla patens
12 Carex pilosa	28 Diphasiastrum complanatum	44 Linnaea borealis	61 Pulsatilla patens	77 Allium schoenoprasum	93 Pulsatilla pratensis
13 Carex rhizina	29 Draba nemorosa	45 Liparis loeselii	62 Pulsatilla pratensis	78 Arenaria procera	94 Ranunculus lanuginosus
14 Cenolophium denudatum	30 Dracocephalum ruyschiana	46 Listera cordata	63 Pyrola media	79 Carex rhizina	95 Saxifraga hirculus
15 Centaurium pulchellum	31 Euonymus verrucosa	47 Lunaria rediviva	64 Ramunculus bulbosus	80 Cucubalus baccifer	96 Silene tatarica
16 Chaerophyllum hirsutum	32 Galium schultesii	48 Lycopodium annotinum	65 Ramunculus lanuginosus	81 Digitalis grandiflora	97 Trifolium alpestre
17 Circaea lutetiana	33 Gentiana cruciata	49 Lycopodium clavatum	66 Rosa sherardii	82 Diphasiastrum complanatum	98 Vicia tenuifolia
18 Conioselinum tataricum	34 Gladiolus imbricatus	50 Myosotis sparsiflora	67 Saxifraga hirculus	83 Euonymus verrucosus	99 Najas major

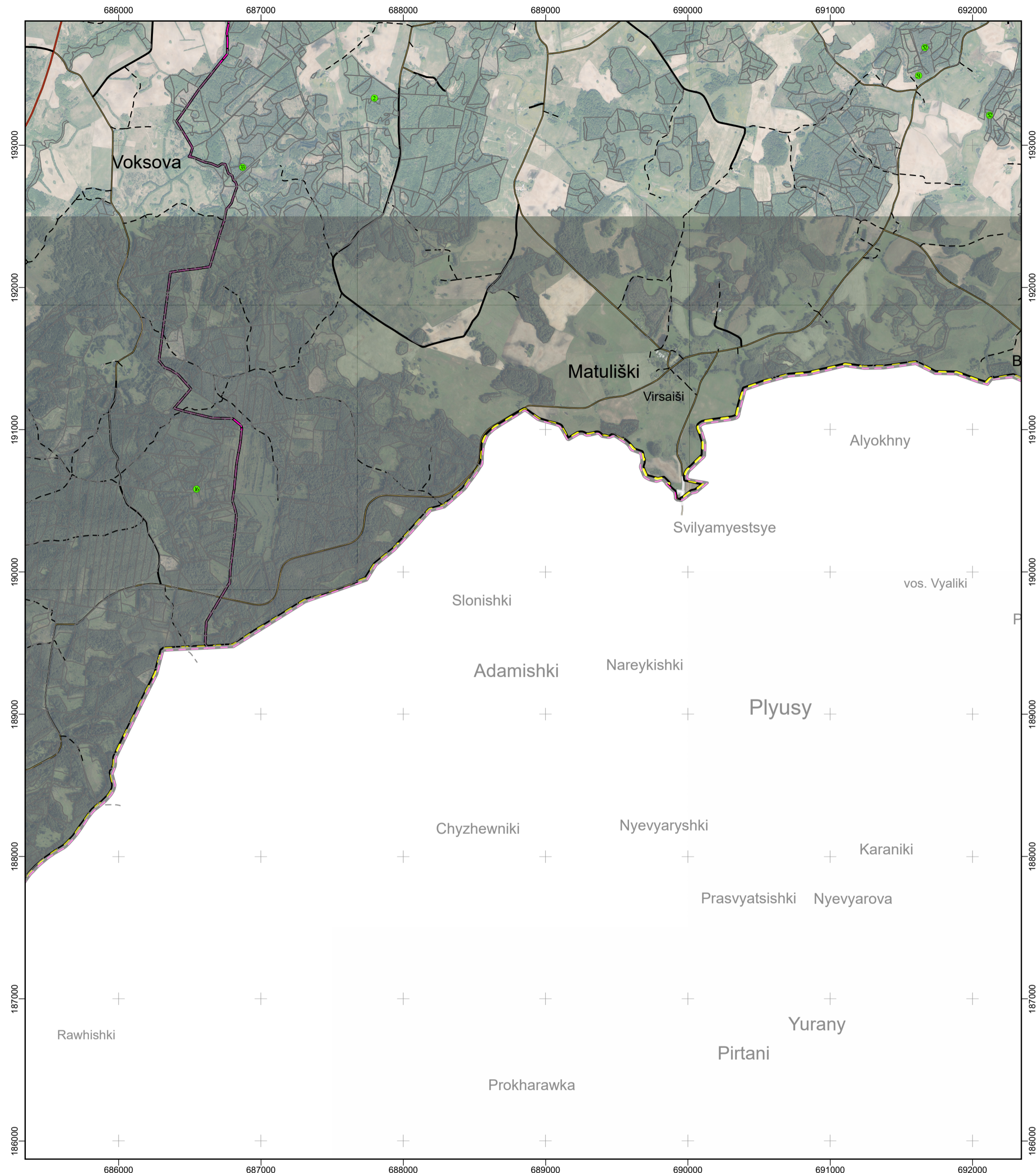


Karšu lapa no 10 līdz 16

Karte piesaistīta Latvijas koordinātu sistēmai (LKS-92) TM projekcijā.

Par kartogrāfisko pamatni izmantota LGIA sagatavotā ortofoto karte mēroga 1:10 000 (2017. gads).



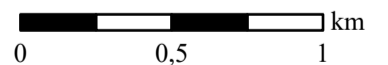


4.5. PIELIKUMS. RETAS UN AIZSARGĀJAMAS AUGU SUGAS AIZSARGĀJAMO AINAVU APVIDŪ "AUGŠDAUGAVA"

Mērogs: 1:25 000

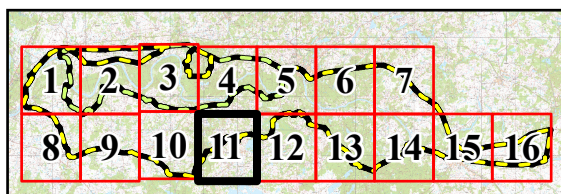
Apzīmējumi

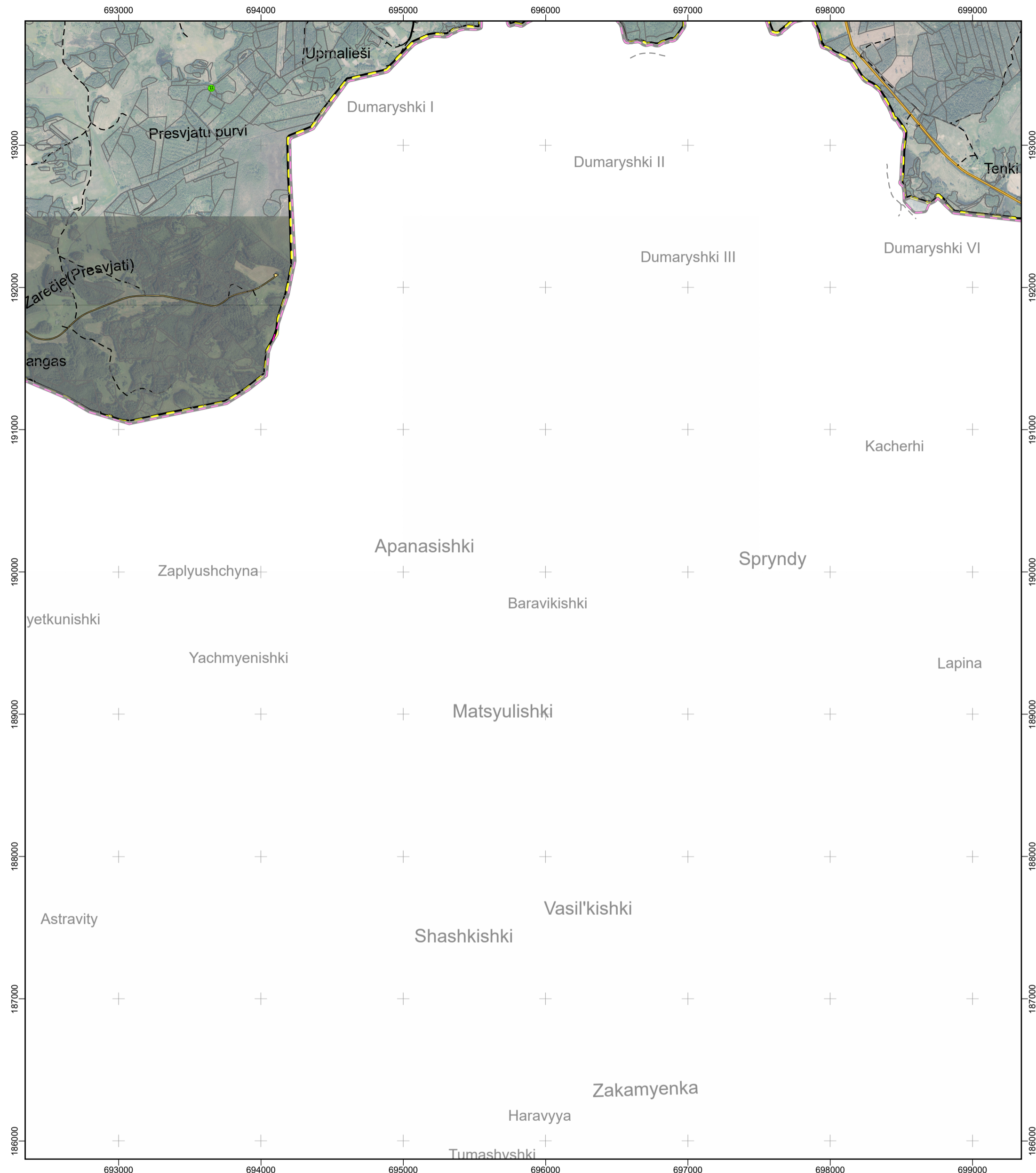
1 Aconitum lasiostomum	17 Crepis praemorsa	33 Gratiola officinalis	49 Najas minor	65 Seseli libanotis	81 Gentiana cruciata
2 Agrimonia pilosa	18 Cucubalus baccifer	34 Gypsophila fastigiata	50 Neottianthe cucullata	66 Silene chlorantha	82 Helianthemum nummularium
3 Ajuga pyramidalis	19 Cyperus fuscus	35 Hammarbya paludosa	51 Onobrychis arenaria	67 Silene tatarica	83 Inula britannica
4 Allium schoenoprasum	20 Dactylorhiza baltica	36 Helianthemum nummularium	52 Orobanchae coerulescens	68 Stellaria crassifolia	84 Lathyrus pisiformis
5 Allium vineale	21 Dactylorhiza incarnata	37 Huperzia selago	53 Orobanchae pallidiflora	69 Trifolium alpestre	85 Lunaria rediviva
6 Anemone sylvestris	22 Dactylorhiza maculata	38 Hydrilla verticillata	54 Peucedanum oreoselinum	70 Trifolium dubium	86 Lycopodium annotinum
7 Arenaria stenophylla	23 Delphinium elatum	39 Inula britannica	55 Pimpinella major	71 Vicia tenuifolia	87 Lycopodium clavatum
8 Botrychium multifidum	24 Dianthus arenarius	40 Iris sibirica	56 Platanthera bifolia	72 Vincetoxicum hirundinaria	88 Myosotis sparsiflora
9 Bromopsis benekenii	25 Digitalis grandiflora	41 Jovibarba globifera	57 Polygonum mite	73 Vincetoxicum hirundinaria	89 Neothiantae cucullata
10 Carex atherodes	26 Diphasiastrum complanatum	42 Jovibarba sobolifera	58 Potamogeton rutilus	74 Agrimonia pilosa	90 Pulmonaria angustifolia
11 Carex montana	27 Diphasiastrum tristachyum	43 Lathyrus pisiformis	59 Pulmonaria angustifolia	75 Ajuga pyramidalis	91 Pulsatilla patens
12 Carex pilosa	28 Diphasiastrum complanatum	44 Linnaea borealis	60 Pulsatilla patens	76 Allium schoenoprasum	92 Pulsatilla pratensis
13 Carex rhizina	29 Draba nemorosa	45 Liparis loeselii	61 Pulsatilla pratensis	77 Arenaria procera	93 Ranunculus lanuginosus
14 Cenolophium denudatum	30 Dracocephalum ruyshiana	46 Listera cordata	62 Pyrola media	78 Carex rhizina	94 Saxifraga hirculus
15 Centaurium pulchellum	31 Euonymus verrucosa	47 Lunaria rediviva	63 Ramunculus bulbosus	79 Cucubalus baccifer	95 Silene tatarica
16 Chaerophyllum hirsutum	32 Galium schultesii	48 Lycopodium annotinum	64 Ramunculus lanuginosus	80 Digitalis grandiflora	96 Trifolium alpestre
17 Circaea lutetiana	33 Gentiana cruciata	49 Lycopodium clavatum	65 Rosa sherardii	81 Diphasiastrum complanatum	97 Vicia tenuifolia
18 Conioselinum tataricum	34 Gladiolus imbricatus	50 Myosotis sparsiflora	66 Saxifraga hirculus	82 Euonymus verrucosus	98 Najas major



Karšu lapa no 11 līdz 16

Karte piesaistīta Latvijas koordinātu sistēmā (LKS-92) TM projekcijā. Par kartogrāfisko pamatni izmantota LĢIA sagatavotā ortofoto karte mēroga 1:10 000 (2017. gads).



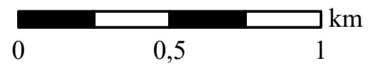


4.5. PIELIKUMS. RETAS UN AIZSARGĀJAMAS AUGU SUGAS AIZSARGĀJAMO AINAVU APVIDŪ "AUGŠDAUGAVA"

Mērogs: 1:25 000

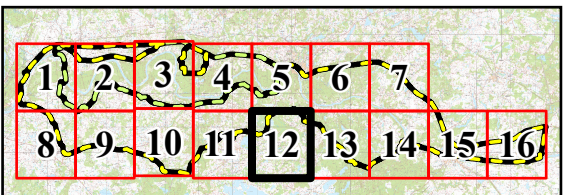
Apzīmējumi

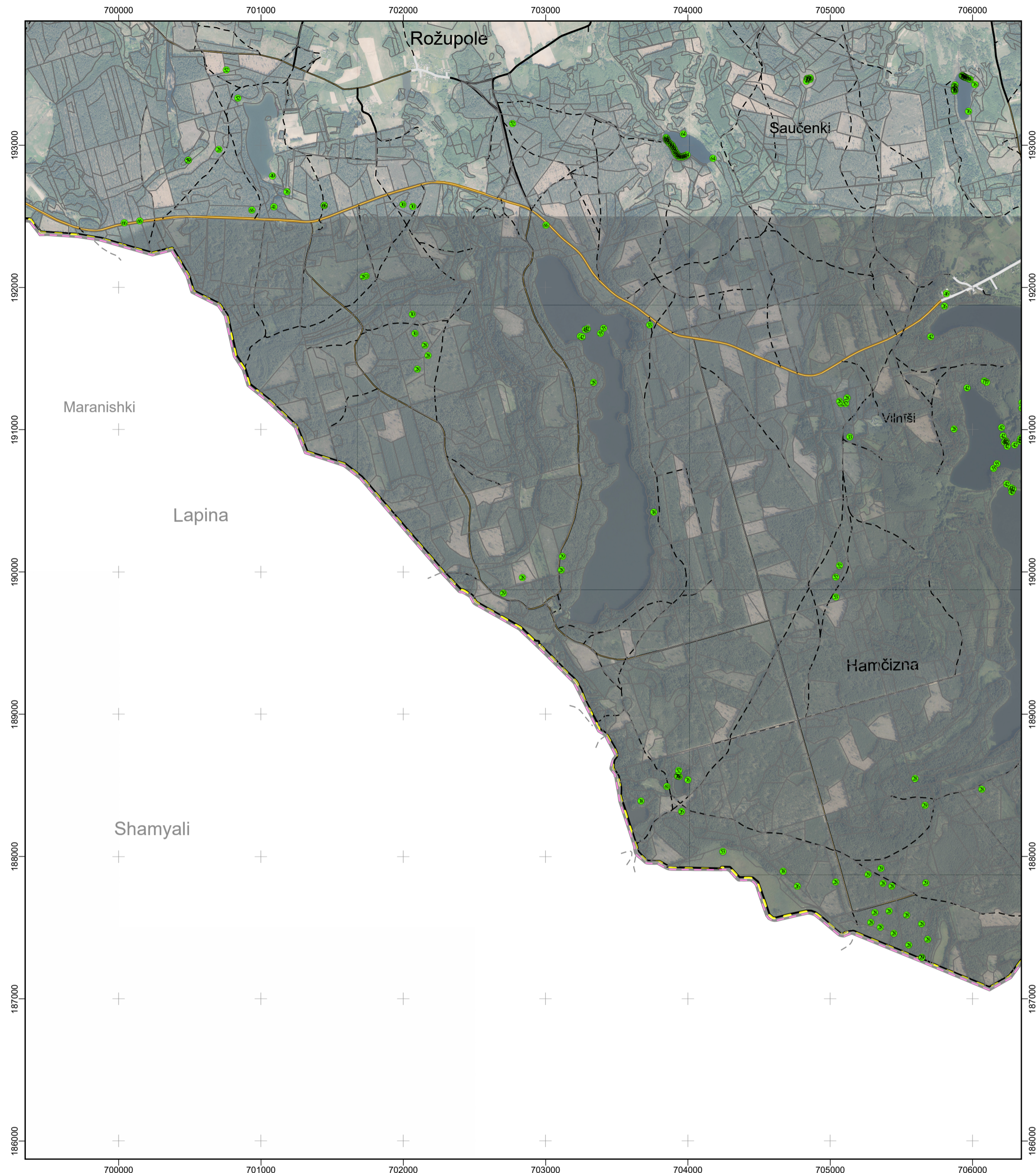
1 Aconitum lasiostomum	16 Crepis praemorsa	31 Gratiola officinalis	46 Najas minor	61 Seseli libanotis	76 Gentiana cruciata
2 Agrimonia pilosa	17 Cucubalus baccifer	32 Gypsophila fastigiata	47 Neottianthe cucullata	62 Silene chlorantha	77 Helianthemum nummularium
3 Ajuga pyramidalis	18 Cyperus fuscus	33 Hammarbya paludosa	48 Onobrychis arenaria	63 Silene tatarica	78 Inula britannica
4 Allium schoenoprasum	19 Dactylorhiza baltica	34 Helianthemum nummularium	49 Orobanche coerulescens	64 Stellaria crassifolia	79 Lathyrus pisiformis
5 Allium vineale	20 Dactylorhiza incarnata	35 Huperzia selago	50 Orobanche pallidiflora	65 Trifolium alpestre	80 Lunaria rediviva
6 Anemone sylvestris	21 Dactylorhiza maculata	36 Hydrilla verticillata	51 Peucedanum oreoselinum	66 Trifolium dubium	81 Lycopodium annotinum
7 Arenaria stenophylla	22 Delphinium elatum	37 Inula britannica	52 Pimpinella major	67 Vicia tenuifolia	82 Lycopodium clavatum
8 Botrychium multifidum	23 Dianthus arenarius	38 Iris sibirica	53 Platanthera bifolia	68 Vincetoxicum hirundinaria	83 Myosotis sparsiflora
9 Bromopsis benekenii	24 Digitalis grandiflora	39 Jovibarba globifera	54 Polygonum mite	69 Vincetoxicum hirundinaria	84 Neothiantae cucullata
10 Carex atherodes	25 Diphasiastrum complanatum	40 Jovibarba sobolifera	55 Potamogeton rutilus	70 Agrimonia pilosa	85 Pulmonaria angustifolia
11 Carex montana	26 Diphasiastrum tristachyum	41 Lathyrus pisiformis	56 Pulmonaria angustifolia	71 Ajuga pyramidalis	86 Pulsatilla patens
12 Carex pilosa	27 Diphasiastrum complanatum	42 Linnaea borealis	57 Pulsatilla patens	72 Allium schoenoprasum	87 Pulsatilla pratensis
13 Carex rhizina	28 Draba nemorosa	43 Liparis loeselii	58 Pulsatilla pratensis	73 Arenaria procera	88 Ranunculus lanuginosus
14 Cenolophium denudatum	29 Dracocephalum ruyshiana	44 Listera cordata	59 Pyrola media	74 Carex rhizina	89 Saxifraga hirculus
15 Centaurium pulchellum	30 Euonymus verrucosa	45 Lunaria rediviva	60 Ramunculus bulbosus	75 Cucubalus baccifer	90 Silene tatarica
16 Chaerophyllum hirsutum	31 Galium schultesii	46 Lycopodium annotinum	61 Ramunculus lanuginosus	76 Digitalis grandiflora	91 Trifolium alpestre
17 Circaea lutetiana	32 Gentiana cruciata	47 Lycopodium clavatum	62 Rosa sherardii	77 Diphasiastrum complanatum	92 Vicia tenuifolia
18 Conioselinum tataricum	33 Gladiolus imbricatus	48 Myosotis sparsiflora	63 Saxifraga hirculus	78 Euonymus verrucosus	93 Najas major



Karšu lapa no 12 līdz 16

Karte piesaistīta Latvijas koordinātu sistēmai (LKS-92) TM projekcijā. Par kartogrāfisko pamatni izmantota LĢIA sagatavotā ortofoto karte mēroga 1:10 000 (2017. gads).



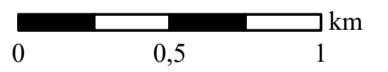


4.5. PIELIKUMS. RETAS UN AIZSARGĀJAMAS AUGU SUGAS AIZSARGĀJAMO AINAVU APVIDŪ "AUGŠDAUGAVA"

Mērogs: 1:25 000

Apzīmējumi

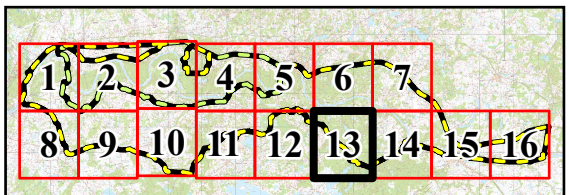
1 Aconitum lasiostomum	17 Crepis praemorsa	33 Gratiola officinalis	49 Najas minor	65 Seseli libanotis	81 Gentiana cruciata
2 Agrimonia pilosa	18 Cucubalus baccifer	34 Gypsophila fastigiata	50 Neottianthe cucullata	66 Silene chlorantha	82 Helianthemum nummularium
3 Ajuga pyramidalis	19 Cyperus fuscus	35 Hammarbya paludosa	51 Onobrychis arenaria	67 Silene tatarica	83 Inula britannica
4 Allium schoenoprasum	20 Dactylorhiza baltica	36 Helianthemum nummularium	52 Orobanche coerulescens	68 Stellaria crassifolia	84 Lathyrus pisiformis
5 Allium vineale	21 Dactylorhiza incarnata	37 Huperzia selago	53 Orobanche pallidiflora	69 Trifolium alpestre	85 Lunaria rediviva
6 Anemone sylvestris	22 Dactylorhiza maculata	38 Hydrilla verticillata	54 Peucedanum oreoselinum	70 Trifolium dubium	86 Lycopodium annotinum
7 Arenaria stenophylla	23 Delphinium elatum	39 Inula britannica	55 Pimpinella major	71 Vicia tenuifolia	87 Lycopodium clavatum
8 Botrychium multifidum	24 Dianthus arenarius	40 Iris sibirica	56 Platanthera bifolia	72 Vincetoxicum hirsutinaria	88 Myosotis sparsiflora
9 Bromopsis benekenii	25 Digitalis grandiflora	41 Jovibarba globifera	57 Polygonum mite	73 Vincetoxicum hirsutinaria	89 Neothianta cucullata
10 Carex atherodes	26 Diphasiastrum complanatum	42 Jovibarba sobolifera	58 Potamogeton rutilus	74 Agrimonia pilosa	90 Pulmonaria angustifolia
11 Carex montana	27 Diphasiastrum tristachyum	43 Lathyrus pisiformis	59 Pulmonaria angustifolia	75 Ajuga pyramidalis	91 Pulsatilla patens
12 Carex pilosa	28 Diphasiastrum complanatum	44 Linnaea borealis	60 Pulsatilla patens	76 Allium schoenoprasum	92 Pulsatilla pratensis
13 Carex rhizina	29 Draba nemorosa	45 Liparis loeselii	61 Pulsatilla pratensis	77 Arenaria procera	93 Ranunculus lanuginosus
14 Cenolophium denudatum	30 Dracocephalum ruyshiana	46 Listera cordata	62 Pyrola media	78 Carex rhizina	94 Saxifraga hirculus
15 Centaurium pulchellum	31 Euonymus verrucosa	47 Lunaria rediviva	63 Ramunculus bulbosus	79 Cucubalus baccifer	95 Silene tatarica
16 Chaerophyllum hirsutum	32 Galium schultesii	48 Lycopodium annotinum	64 Ramunculus lanuginosus	80 Digitalis grandiflora	96 Trifolium alpestre
17 Circaea lutetiana	33 Gentiana cruciata	49 Lycopodium clavatum	65 Rosa sherardii	81 Diphasiastrum complanatum	97 Vicia tenuifolia
18 Conioselinum tataricum	34 Gladiolus imbricatus	50 Myosotis sparsiflora	66 Saxifraga hirculus	82 Euonymus verrucosus	98 Najas major



Karšu lapa no 13 līdz 16

Karte piesaistīta Latvijas koordinātu sistēmai (LKS-92) TM projekcijā.

Par kartogrāfisko pamatni izmantota LĢIA sagatavotā ortofoto karte mēroga 1:10 000 (2017. gads).





4.5. PIELIKUMS. RETAS UN AIZSARGĀJAMAS AUGU SUGAS AIZSARGĀJAMO AINAVU APVIDŪ “AUGŠDAUGAVA”

Mērogs: 1:25 000

Apzīmējumi

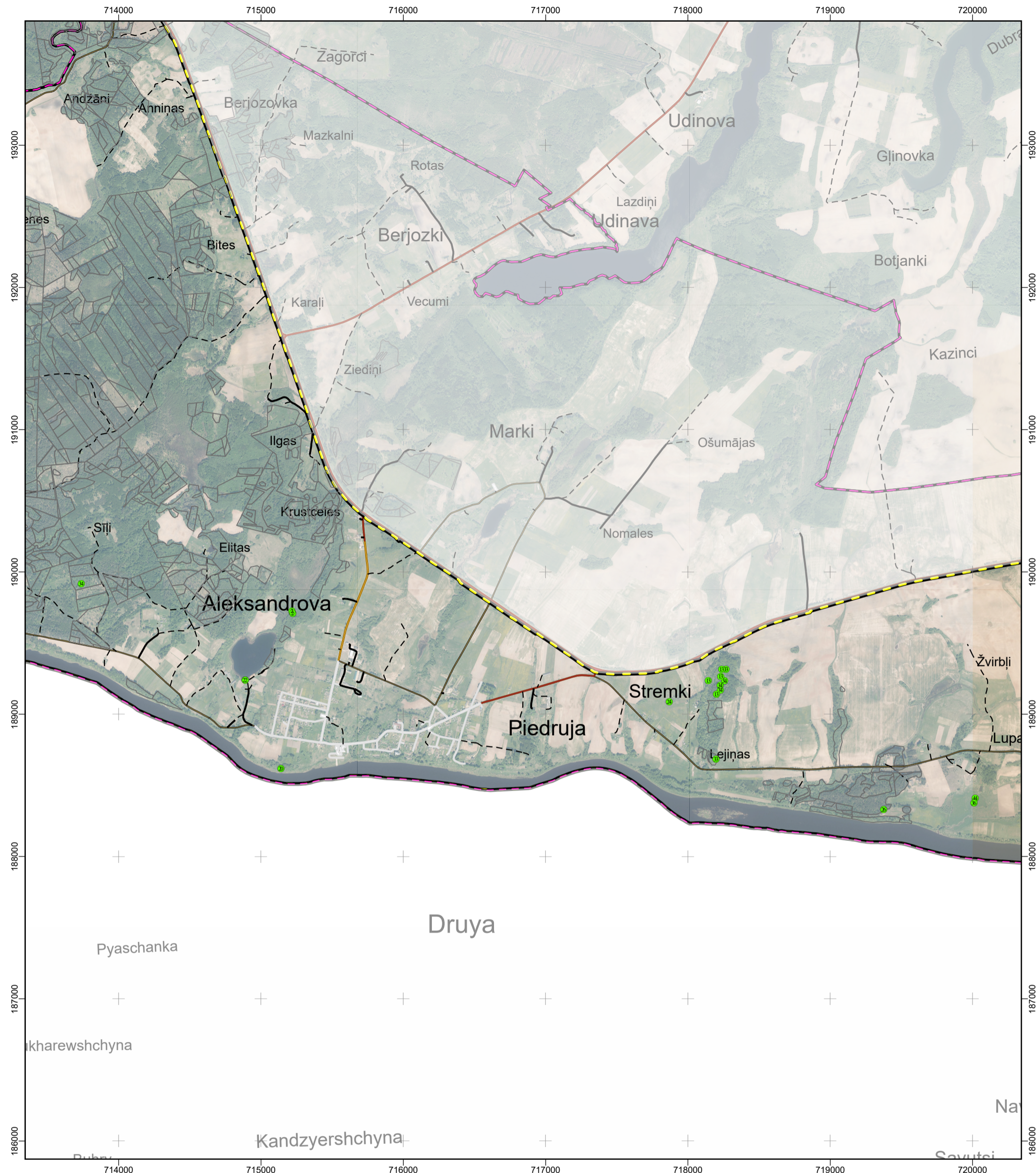
1 Aconitum lasiostomum	9 Crepis praemorsa	17 Gratiola officinalis	25 Najas minor	33 Seseli libanotis	41 Gentiana cruciata
2 Agrimonia pilosa	10 Cucubalus baccifer	18 Gypsophila fastigiata	26 Neottianthe cucullata	34 Silene chlorantha	42 Helianthemum nummularium
3 Ajuga pyramidalis	11 Cyperus fuscus	19 Hammarbya paludosa	27 Onobrychis arenaria	35 Silene tatarica	43 Inula britannica
4 Allium schoenoprasum	12 Dactylorhiza baltica	20 Helianthemum nummularium	28 Orobanche coerulescens	36 Stellaria crassifolia	44 Lathyrus pisiformis
5 Allium vineale	13 Dactylorhiza incarnata	21 Huperzia selago	29 Orobanche pallidiflora	37 Trifolium alpestre	45 Lunaria rediviva
6 Anemone sylvestris	14 Dactylorhiza maculata	22 Hydrilla verticillata	30 Peucedanum oreoselinum	38 Trifolium dubium	46 Lycopodium annotinum
7 Arenaria stenophylla	15 Delphinium elatum	23 Inula britannica	31 Pimpinella major	39 Vicia tenuifolia	47 Lycopodium clavatum
8 Botrychium multifidum	16 Dianthus arenarius	24 Iris sibirica	32 Platanthera bifolia	40 Vincetoxicum hirundinaria	48 Myosotis sparsiflora
9 Bromopsis benekenii	17 Digitalis grandiflora	25 Jovibarba globifera	33 Polygonum mite	42 Vincetoxicum hirundinaria	49 Neothiantae cucullata
10 Carex atherodes	18 Diphasiastrum complanatum	26 Jovibarba sobolifera	34 Potamogeton rutilus	43 Agrimonia pilosa	50 Pulmonaria angustifolia
11 Carex montana	19 Diphasiastrum tristachyum	27 Lathyrus pisiformis	35 Pulmonaria angustifolia	44 Ajuga pyramidalis	51 Pulsatilla patens
12 Carex pilosa	20 Diphasiastrum complanatum	28 Linnaea borealis	36 Pulsatilla patens	45 Allium schoenoprasum	52 Pulsatilla pratensis
13 Carex rhizina	21 Draba nemorosa	29 Liparis loeselii	37 Pulsatilla pratensis	46 Arenaria procera	53 Ranunculus lanuginosus
14 Cenolophium denudatum	22 Dracocephalum ruyshiana	30 Listera cordata	38 Pyrola media	47 Carex rhizina	54 Saxifraga hirculus
15 Centaurium pulchellum	23 Euonymus verrucosa	31 Lunaria rediviva	39 Ramunculus bulbosus	48 Cucubalus baccifer	55 Silene tatarica
16 Chaerophyllum hirsutum	24 Galium schultesii	32 Lycopodium annotinum	40 Ramunculus lanuginosus	49 Digitalis grandiflora	56 Trifolium alpestre
17 Circaea lutetiana	25 Gentiana cruciata	33 Lycopodium clavatum	41 Rosa sherardii	50 Diphasiastrum complanatum	57 Vicia tenuifolia
18 Conioselinum tataricum	26 Gladiolus imbricatus	34 Myosotis sparsiflora	42 Saxifraga hirculus	51 Euonymus verrucosus	58 Najas major

0 0,5 1 km

Karšu lapa no14 līdz 16
 Karte piesaistīta Latvijas koordinātu sistēmai (LKS-92) TM projekcijā.
 Par kartogrāfisko pamatni izmantota LGIA sagatavotā ortofoto karte mēroga 1:10 000 (2017. gads).

DABAS SKAITĪŠANA

100 LATVIJAS UNIVERSITĀTE
 ANNO 1919

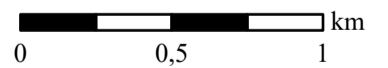


4.5. PIELIKUMS. RETAS UN AIZSARGĀJAMAS AUGU SUGAS AIZSARGĀJAMO AINAVU APVIDŪ "AUGŠDAUGAVA"

Mērogs: 1:25 000

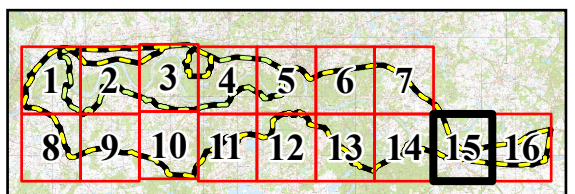
Apzīmējumi

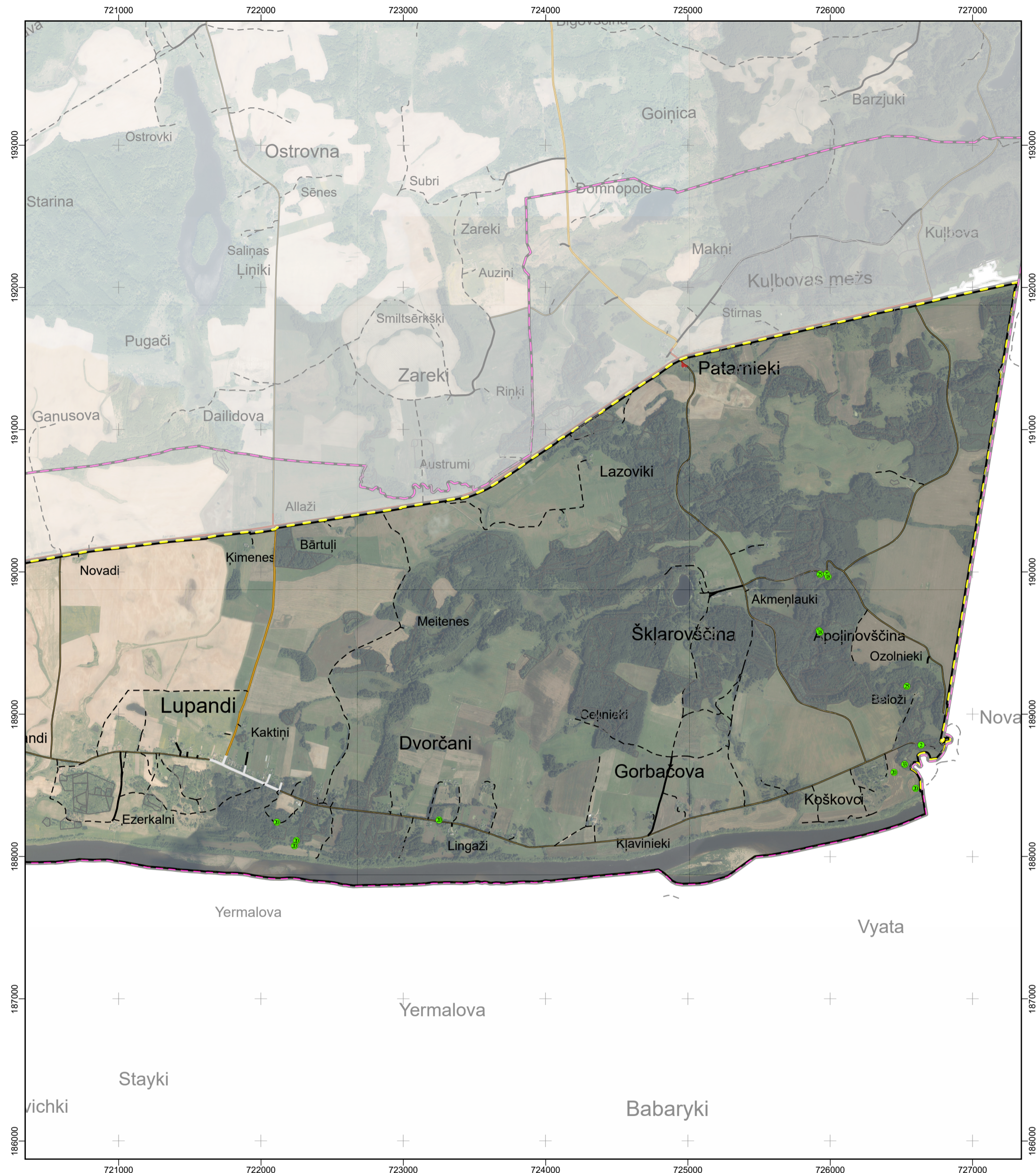
1 Aconitum lasiostomum	21 Crepis praemorsa	41 Gratiola officinalis	61 Najas minor	81 Seseli libanotis	101 Gentiana cruciata
2 Agrimonia pilosa	22 Cucubalus baccifer	42 Gypsophila fastigiata	62 Neottianthe cucullata	82 Silene chlorantha	102 Helianthemum nummularium
3 Ajuga pyramidalis	23 Cyperus fuscus	43 Hammarbya paludosa	63 Onobrychis arenaria	83 Silene tatarica	103 Inula britannica
4 Allium schoenoprasum	24 Dactylorhiza baltica	44 Helianthemum nummularium	64 Orobanche coerulescens	84 Stellaria crassifolia	104 Lathyrus pisiformis
5 Allium vineale	25 Dactylorhiza incarnata	45 Huperzia selago	65 Orobanche pallidiflora	85 Trifolium alpestre	105 Lunaria rediviva
6 Anemone sylvestris	26 Dactylorhiza maculata	46 Hydrilla verticillata	66 Peucedanum oreoselinum	86 Trifolium dubium	106 Lycopodium annotinum
7 Arenaria stenophylla	27 Delphinium elatum	47 Inula britannica	67 Pimpinella major	87 Vicia tenuifolia	107 Lycopodium clavatum
8 Botrychium multifidum	28 Dianthus arenarius	48 Iris sibirica	68 Platanthera bifolia	88 Vincetoxicum hirundinaria	108 Myosotis sparsiflora
9 Bromopsis benekenii	29 Digitalis grandiflora	49 Jovibarba globifera	69 Polygonum mite	89 Vincetoxicum hirundinaria	109 Neothiantae cucullata
10 Carex atherodes	30 Diphasiastrum complanatum	50 Jovibarba sobolifera	70 Potamogeton rutilus	90 Agrimonia pilosa	110 Pulmonaria angustifolia
11 Carex montana	31 Diphasiastrum tristachyum	51 Lathyrus pisiformis	71 Pulmonaria angustifolia	91 Ajuga pyramidalis	111 Pulsatilla patens
12 Carex pilosa	32 Diphasiastrum complanatum	52 Linnaea borealis	72 Pulsatilla patens	92 Allium schoenoprasum	112 Pulsatilla pratensis
13 Carex rhizina	33 Draba nemorosa	53 Liparis loeselii	73 Pulsatilla pratensis	93 Arenaria procera	113 Ranunculus lanuginosus
14 Cenolophium denudatum	34 Dracocephalum ruyschiana	54 Listera cordata	74 Pyrola media	94 Carex rhizina	114 Saxifraga hirculus
15 Centaurium pulchellum	35 Euonymus verrucosa	55 Lunaria rediviva	75 Ramunculus bulbosus	95 Cucubalus baccifer	115 Silene tatarica
16 Chaerophyllum hirsutum	36 Galium schultesii	56 Lycopodium annotinum	76 Ramunculus lanuginosus	96 Digitalis grandiflora	116 Trifolium alpestre
17 Circaea lutetiana	37 Gentiana cruciata	57 Lycopodium clavatum	77 Rosa sherardii	97 Diphasiastrum complanatum	117 Vicia tenuifolia
18 Conioselinum tataricum	38 Gladiolus imbricatus	58 Myosotis sparsiflora	78 Saxifraga hirculus	98 Euonymus verrucosus	118 Najas major



Karšu lapa no 15 līdz 16

Karte piesaistīta Latvijas koordinātu sistēmai (LKS-92) TM projekcijā. Par kartogrāfisko pamatni izmantota LĢIA sagatavotā ortofoto karte mēroga 1:10 000 (2017. gads).



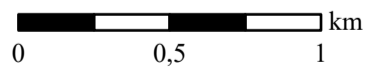


4.5. PIELIKUMS. RETAS UN AIZSARGĀJAMAS AUGU SUGAS AIZSARGĀJAMO AINAVU APVIDŪ "AUGŠDAUGAVA"

Mērogs: 1:25 000

Apzīmējumi

- | | | | | | |
|---------------------------|------------------------------|-----------------------------|----------------------------|------------------------------|-----------------------------|
| 1 Aconitum lasiostomum | 17 Crepis praemorsa | 33 Gratiola officinalis | 49 Najas minor | 65 Seseli libanotis | 81 Gentiana cruciata |
| 2 Agrimonia pilosa | 18 Cucubalus baccifer | 34 Gypsophila fastigiata | 50 Neottianthe cucullata | 66 Silene chlorantha | 82 Helianthemum nummularium |
| 3 Ajuga pyramidalis | 19 Cyperus fuscus | 35 Hammarbya paludosa | 51 Onobrychis arenaria | 67 Silene tatarica | 83 Inula britannica |
| 4 Allium schoenoprasum | 20 Dactylorhiza baltica | 36 Helianthemum nummularium | 52 Orobanche coerulescens | 68 Stellaria crassifolia | 84 Lathyrus pisiformis |
| 5 Allium vineale | 21 Dactylorhiza incarnata | 37 Huperzia selago | 53 Orobanche pallidiflora | 69 Trifolium alpestre | 85 Lunaria rediviva |
| 6 Anemone sylvestris | 22 Dactylorhiza maculata | 38 Hydrilla verticillata | 54 Peucedanum oreoselinum | 70 Trifolium dubium | 86 Lycopodium annotinum |
| 7 Arenaria stenophylla | 23 Delphinium elatum | 39 Inula britannica | 55 Pimpinella major | 71 Vicia tenuifolia | 87 Lycopodium clavatum |
| 8 Botrychium multifidum | 24 Dianthus arenarius | 40 Iris sibirica | 56 Platanthera bifolia | 72 Vincetoxicum hirundinaria | 88 Myosotis sparsiflora |
| 9 Bromopsis benekenii | 25 Digitalis grandiflora | 41 Jovibarba globifera | 57 Polygonum mite | 73 Vincetoxicum hirundinaria | 89 Neothiantae cucullata |
| 10 Carex atherodes | 26 Diphasiastrum complanatum | 42 Jovibarba sobolifera | 58 Potamogeton rutilus | 74 Agrimonia pilosa | 90 Pulmonaria angustifolia |
| 11 Carex montana | 27 Diphasiastrum tristachyum | 43 Lathyrus pisiformis | 59 Pulmonaria angustifolia | 75 Ajuga pyramidalis | 91 Pulsatilla patens |
| 12 Carex pilosa | 28 Diphasiastrum complanatum | 44 Linnaea borealis | 60 Pulsatilla patens | 76 Allium schoenoprasum | 92 Pulsatilla pratensis |
| 13 Carex rhizina | 29 Draba nemorosa | 45 Liparis loeselii | 61 Pulsatilla pratensis | 77 Arenaria procera | 93 Ranunculus lanuginosus |
| 14 Cenolophium denudatum | 30 Dracocephalum ruyschiana | 46 Listera cordata | 62 Pyrola media | 78 Carex rhizina | 94 Saxifraga hirculus |
| 15 Centaurium pulchellum | 31 Euonymus verrucosa | 47 Lunaria rediviva | 63 Ramunculus bulbosus | 79 Cucubalus baccifer | 95 Silene tatarica |
| 16 Chaerophyllum hirsutum | 32 Galium schultesii | 48 Lycopodium annotinum | 64 Ramunculus lanuginosus | 80 Digitalis grandiflora | 96 Trifolium alpestre |
| 17 Circaea lutetiana | 33 Gentiana cruciata | 49 Lycopodium clavatum | 65 Rosa sherardii | 81 Diphasiastrum complanatum | 97 Vicia tenuifolia |
| 18 Conioselinum tataricum | 34 Gladiolus imbricatus | 50 Myosotis sparsiflora | 66 Saxifraga hirculus | 82 Euonymus verrucosus | 98 Najas major |



Karšu lapa no 16 līdz 16

Karte piesaistīta Latvijas koordinātu sistēmai (LKS-92) TM projekcijā.

Par kartogrāfisko pamatni izmantota LĢIA sagatavotā ortofoto karte mēroga 1:10 000 (2017. gads).

