

Oppland

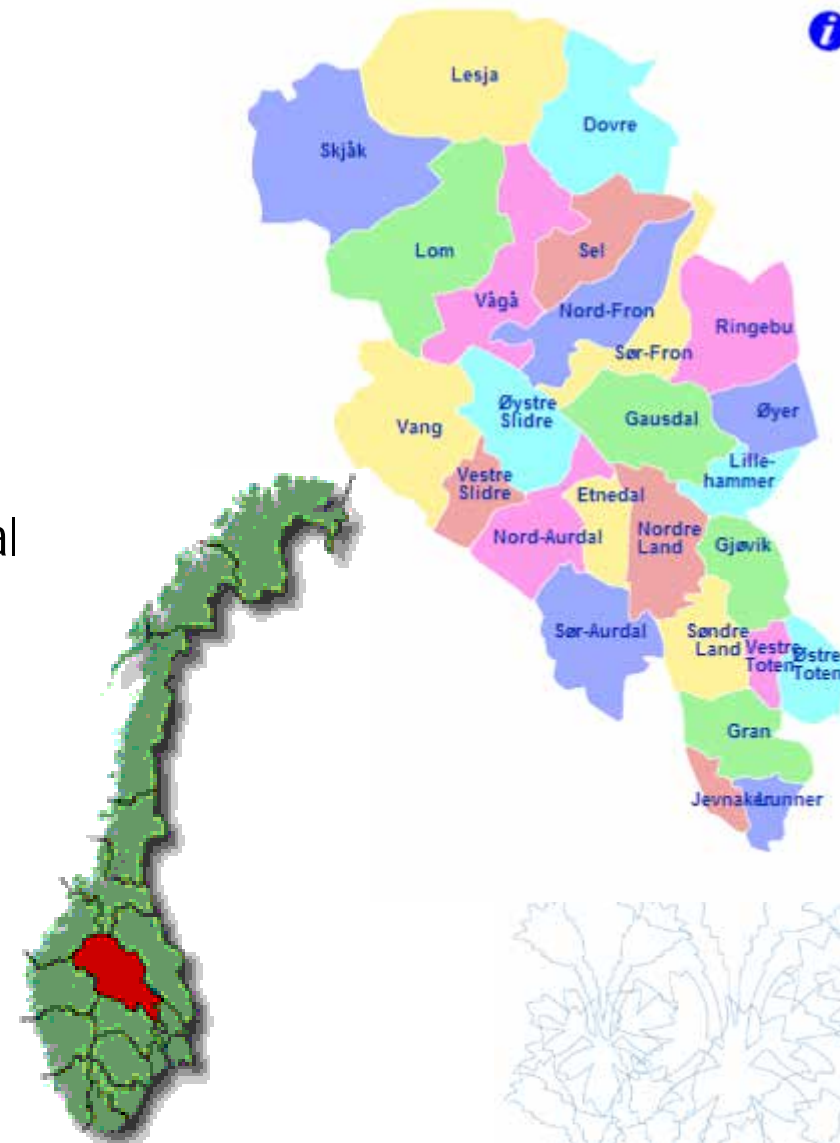


OPPLAND
fylkeskommune



Oppland county

- Area: approx. 25.000 km²
- Population: approx. 187.000
- Municipalities: 26
- Regions: 6
 Hadeland, Gjøvik, Lillehammer, Valdres,
 Midt-Gudbrandsdal, Nord-Gudbrandsdal
- Towns: 5
 Lillehammer, Gjøvik, Fagernes, Otta,
 Vinstra



Geography

- 80 % above 600 m above sea level
- Norway's biggest lake, Mjøsa
- Norway's highest mountain, Galdhøpiggen 2469 m
- Typical inland climate
- Historically an agricultural county



Norwegian public administration

Three levels:

- Central government
- County authority (19)
- Municipality (430)



Opportunities in Oppland



Political organisation

- County Council – 37 elected repr.
- County Executive Board – 9 repr.
- Committees since the 2011 election:
 - The Education Committee
 - The Transport Committee
 - The Culture, Environment and Regional Development Committee



Gro Lundby, Labour Party
County Mayor

Parties in the County Council:

- Labour Party
- Conservative Party
- Centre Party
- Christian Democratic Party
- Liberal Party
- Socialist Left Party
- Progress Party

Administrative organisation

Chief County Executive Group

Rasmus Olav Vigrestad, CCE
Terje Kind
Hjalmar Solbjør

CCE advisers

- | Information
- | Purchasing, law
- | Political secretariat
- | Ownership

Departments

- | Upper secondary education – 13 schools, 4 teams, 6 career centers
- | Opplandstrafikk – 3 teams
- | Regional development – 4 teams
- | Culture
- | Cultural heritage
- | Dental services – 22 dental clinics
- | County library
- | County archive
- | Property
- | ICT
- | Human resources
- | Finances
- | Archive (central adm.)
- | Service center

Teams and networks

- | Learning team/network
- | Info network



County responsibilities

- Upper secondary education
- Career centres, adult learning
- Regional transport
- Regional development
- Business development
- Regional planning
- Environment, energy, climate
- Tourism
- Culture
- Public health
- Cultural heritage
- Regional library
- Dental health care





Internationalization

- International strategy adopted by the County Council in June 2012
- Active participation in European policy development
- Contribute to increased internationalisation in Oppland
- Participation in international organisations
- Bilateral cooperation agreements

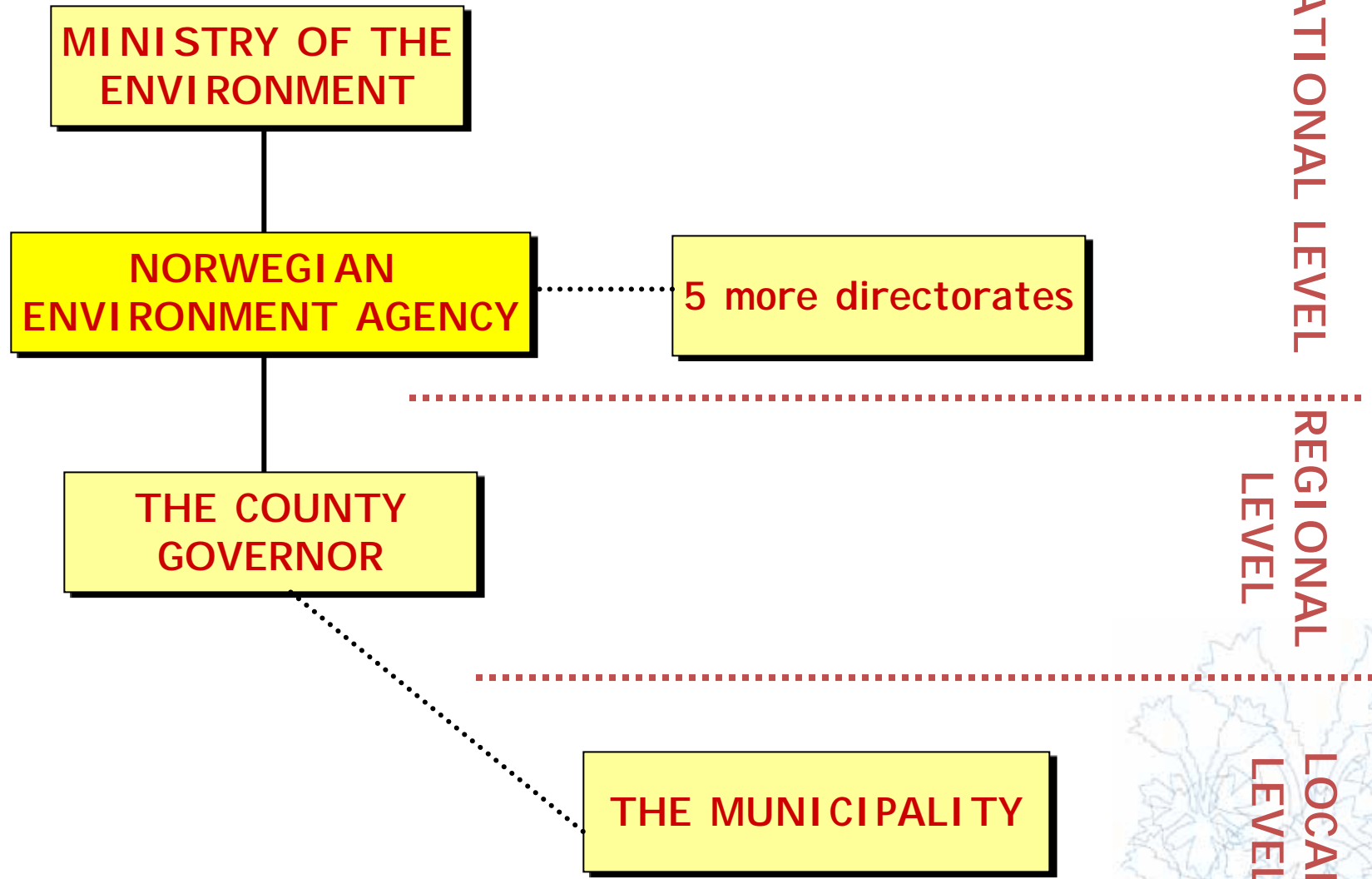


Planning in Norway

- | **The Government and the Storting (Parliament) set national targets around which the local and regional authorities base their planning decisions.**



Nature Conservation in Norway



Oppland county's responsibilities

- | Political
- | Responsible for the process of making Regional Master Plans and Regional Strategies
- | Responsible for guidance towards the municipalities in spatial and social planning
- | Act as hearing part in open consultations



Regional Planning Strategy

- | Set out goals to promote regional development in the county and in the county's regions
- | Determine what types of Regional Master Plans are to be made or revised (public health, climate and energy, shopping malls...etc)



Example: Regional Master Plans for the protection of wild reindeers

- Oppland County Council has adopted one of three regional plans for the protection of wild reindeers



Zones requiring special consideration

- | As implemented by the Planning and Building Act





Our role in this project



- | Draw upon our regional Planning Strategy
- | Regional Master Plans
 - Make use of our experience in our regional plan for wild reindeer
- | Tool of visualizing zones requiring special consideration – as implemented by the Planning and Building Act – our experience
- | Draw upon our network

